

iSmove



PRICE LIST MODEL YEAR 2022



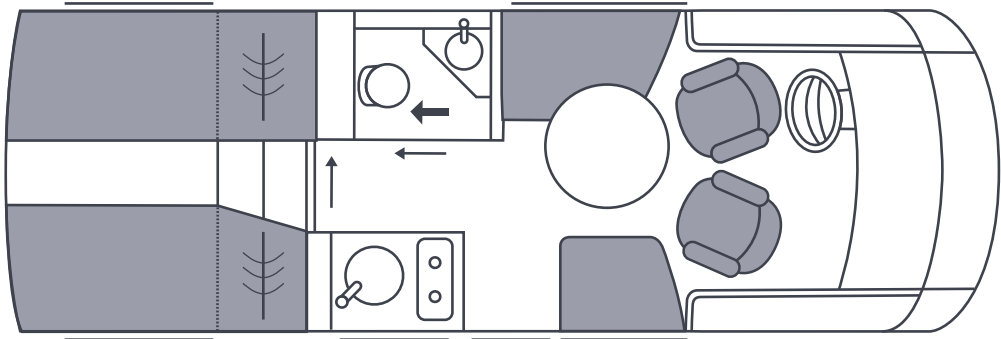
Clou inside



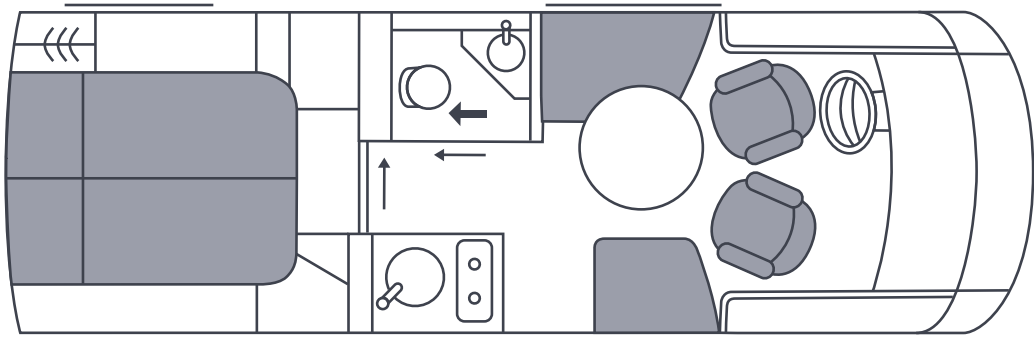
**YOUR NEW iMOVE:
UNDER YOUR RULES.**

| | |
|-----------------------|----|
| STANDARD EQUIPMENT | 4 |
| TECHNICAL DATA | 6 |
| EQUIPMENT PACKS | 10 |
| OPTIONAL FEATURES | 14 |
| IMPORTANT INFORMATION | 22 |

**iMOVE
MODELS 2022**



6.9 E



7.3 F

STANDARD EQUIPMENT

CHASSIS

- Fiat Ducato with 3,5 to. technically permissible laden mass
- Turbo diesel engine with electronically controlled Common Rail Direct Injection
- 2,2 l engine, power of 103 kW, 140 HP
- Emission class Euro VI E with exhaust gas recirculation
- Manual 6-speed transmission
- Airbag for driver and passenger seat
- Electronically controlled anti-lock braking system (ABS)
- ESC
- Traction control, hill holder, traction + and hill descent control
- Tyres on front and rear axle with traction profile, M+S designation 225/ 75R16
- 16" Fiat alloy wheels
- Disc brakes on front and rear axle
- Electronic brake pad wear indicator
- Electronic brake force distribution (EBFD)
- Alternator 14 V / 150 A
- Battery 12 V / 95 Ah
- Fuel tank 75 l + 19 l AdBlue tank
- Start / stop system
- Automatic air conditioning with pollen filter in the driver's cab
- cruise control
- comfort springs at the front axle
- Independent suspension on front and rear axle
- AL-KO-lightweight low frame chassis with maximum frame lowering (144 mm)
- Hot-dip galvanised frame elements and wide chassis
- Bracing of the chassis by means of a 42 mm thick sandwich floor panel screwed and glued to the AL-KO low frame

DRIVER’S CAB

- Panoramic windscreen made of laminated safety glass, tinted, with sun shield
- Laterally suspended exterior rear-view mirrors
- Original Fiat Crashbox
- Engine bonnet with large opening angle and gas pressure opening mechanism
- Belt-integrated driver and passenger seat, rotatable by 180°
- Electric steering
- Height-adjustable steering wheel
- 2 USB charging sockets for tablets and smartphones
- Practical storage space on driver's and passenger's side
- Darkening pleats for driver and passenger side window
- Electrically adjustable isolation front plissé (variable sight protection for the windscreen)
- Exterior mirrors, electrically adjustable and heatable, in the same color as the model

BODYSHELL

- Exterior panels including garage door(s) made of torsion-resistant 2-sided-aluminium sandwich construction (30 mm) with styrofoam insulation (RTM)
- Roof panel in sandwich construction (30 mm), torsion-resistant with styrofoam insulation (RTM), inside aluminium, outside corrosion-free GRP High Strength X-treme including gel coat sealing
- Ceiling-to-wall connections without cold bridges, by means of highly compressed PU hard profiles
- Box structure completely without wood
- Lighting protection ("Faraday" cage)
- Entire roof safe to walk on
- Aluminium roof profiles with rain water channel for reducing side panel soiling
- Outer plate smooth, stove-enamelled white
- Connection of roof plate and front mask free of displacements prevents accumulation of rain water on the roof
- Side skirts of smooth aluminium profiles, stove-enamelled white
- Heated and insulated central double floor of 270 mm height
- Water and waste water tank frost-proof integrated in the insulated double floor
- Solid entrance door with double locking
- Exterior, electrically operated double entrance step, hidden behind a skirt
- Spacious rear garage with lighting, heatable and resistant floor cover
- Rear garage door, passenger side, with low loading height
- Garage walls covered with needle felt
- Tie system in the garage including 4 adjustable eyelets in each rail
- Insulated bodyshell windows, double-glazed plastic window in outer aluminium frame with PU insulation, with pleated darkening blind and insect protection
- LED daytime running- and back light
- Awning light above entrance door

LIVING AND SLEEPING

- Entrance door with boarding aid, coat hooks and integrated waste bin
- Continuously level floor from the driver's cab through the lounge area
- Wear-resistant floor covering in wooden look
- High quality wear-resistant upholstery in 27 different combinations (leather with extra charge)
- Seat cushions with high comfort thanks to the 3-layer foam concept
- Round lounge table with sliding table top
- Storage space in seat bench on passenger's side, with additional access hatch on the side
- Overhead cupboards with push-to-open system (gas pressure buffers) for maximum comfort in use
- Rear bed(s) with slatted frame and comfortable cold foam mattress
- Light management via touch screen made from genuine glass
- Power LED reading spots at the rear bed(s) and in the living room
- Bed access with night lighting
- Steps to the rear single beds with storage space
- Flexible reading lights at the rear bed
- Rear panelling "nature green"
- Skylight 40 × 40 cm
- Anthracite coloured microfiber on ceiling and on the skylight's frame

KITCHEN

- Embedded two-flame gas cooker with electric ignition
- Single-lever mixer tap
- Sliding cutting board
- Kitchen low cabinets with central locking
- Kitchen drawers with pull-in mechanism, available in different designs
- Refrigerator 106 l, with freezer, AES automatic
- Skylight 40 × 40 cm

BATHROOM AND TOILET

- Intelligent bathroom concept with swivelling wall
- Spacious shower with backlit shelves
- High-quality bathroom door
- Entire shower cab made of wear-resistant GRP
- Single-lever mixer tap for washbasin and shower
- Stand on wash-basin
- Shower grille
- Cassette toilet with trolley system
- Bathroom with towel rack and hooks
- Roof-light with insect screen and pleated darkening blind

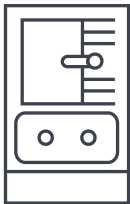
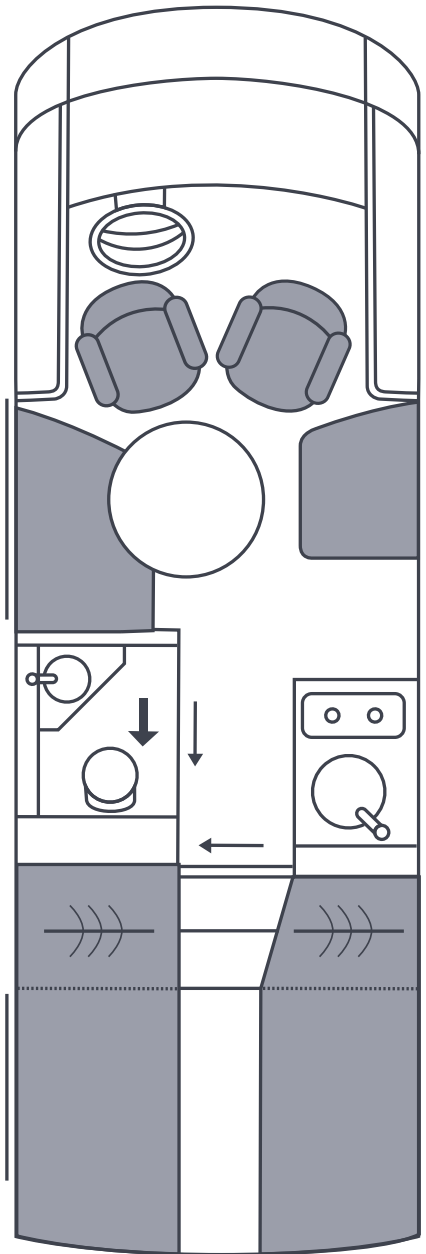
HEATING AND WATER

- Centralised, heatable water disposal compartment on driver side, discharge cocks for waste water / fresh water tank with large diameter (1 1/4") for comfortable discharge
- Fresh and waste water tank in the heatable double floor
- Openings for cleaning on top for fresh and waste water tanks, accessible from the lounge area
- Integrated warm-water heater for the supply of all consuming points
- Centralized boosted water supply over silent pump including filter system
- Screwable water connection for the pump and the filter
- Space for 2 × 11 kg gas bottles
- Truma air heating system (Combi 6)
- Mono control crash sensor for gas pressure regulator

ELECTRONICS

- Central electric system in the garage, easy to access
- 100 Ah battery
- 30 A charger with electronic control
- Battery control system with protection against overload and complete discharge
- Power-down of the electrics in case of undervoltage or overheat
- 230 V CEE connection on driver's side, protected and accessible behind a hatch
- Automatic fault current circuit breaker
- Control panel with digital display
- 5 × 230 V and 2 × USB sockets in the rear bedroom, living room and driver's cab
- Lights in LED technology, dimmable (roof spots and indirect lighting)
- LED lights in garage and water supply compartment

TECHNICAL DATA



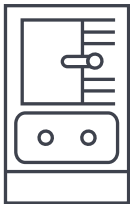
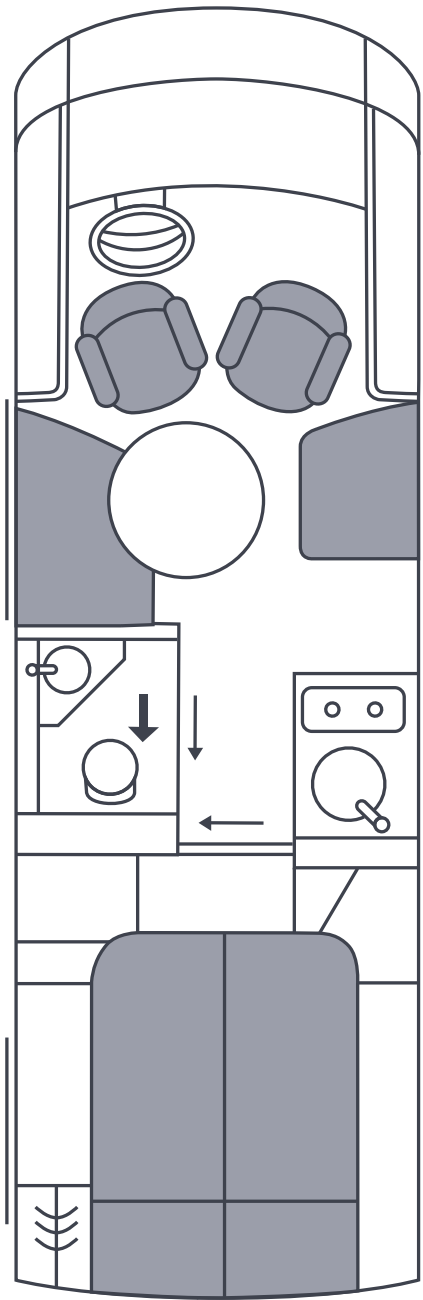
optional:
premium kitchen

iSmove 6.9 E

| | | |
|---|--|--|
| Base vehicle | | Fiat Ducato, Euro VI E |
| Chassis / Frame | | AL-KO low frame AMC 35L (opt.: AMC45H) |
| Engine | | Heavy Duty homologation |
| Output in kW / HP | | Multijet 3: 103/140 (opt.: 118/160, 132/180) |
| Maximum torque in Nm | | 350 (opt.: 380 / 400/450) |
| Type | | 4-cylinder TD with VGT turbocharger |
| Engine displacement in cm³ | | 2,200 |
| Chassis / Tyres | | |
| Wheel base in mm | | 4,100 |
| Number of axles | | 2 |
| Dimensions and weights (without accessories) | | |
| Overall length in mm | | 6,995 |
| Overall width in mm | | 2,278 |
| Overall height in mm | | 2,835 |
| Technically permissible laden mass in kg | | 3,500 (opt.: 3,700 / 4,500) |
| Mass in running order in kg approx. ^{1) / 4)} | | 2,860 |
| Maximum payload in kg ²⁾ | | 640 (opt.: 840 / 1,640) |
| Technically permissible towing weightbraked in kg ^{3) / 5) / 6)} | | 2,000 |
| Seats | | |
| Seats fitted with 3-point safety belt ⁴⁾ | | 2 (3,4,5) |
| Couch behind driver (length × width) in mm | | 1,190 × 405 |
| Couch behind passenger (length × width) in mm | | 910 × 605 |
| Beds | | |
| Overhead front bed (length × width) in mm | | 1,870 × 1,300 |
| Rear bed (length × width) in mm | | 2,065 × 735 / 1,975 × 730 |
| Filling quantities | | |
| Fuel tank in l | | 75 |
| AdBlue tank in l | | 19 |
| Water tank content in l in driving / camping mode | | 20 / 200 |
| Waste water tank in l | | 130 |
| Gas supply in kg | | 2 × 11 |
| Dimensions of the garage | | |
| Maximum garage height in mm | | 1,134 |
| Maximum available surface (length × width) in mm | | 2,010 × 1,080 |
| Price in EUR, ex works, VAT not included | | 80,975 |

1), 2), 3), 4), 5), 6) on page 23

TECHNICAL DATA



optional:
premium kitchen

iSmove 7.3 F

| | |
|---|--|
| Base vehicle | Fiat Ducato, Euro VI E |
| Chassis / Frame | AL-KO low frame AMC 35L (opt.: AMC45H) |
| Engine | Heavy Duty homologation |
| Output in kW / HP | Multijet 3: 103/140 (opt.: 118/160, 132/180) |
| Maximum torque in Nm | 350 (opt.: 380 / 400/450) |
| Type | 4-cylinder TD with VGT turbocharger |
| Engine displacement in cm³ | 2,200 |
| Chassis / Tyres | |
| Wheel base in mm | 4,100 |
| Number of axles | 2 |
| Dimensions and weights (without accessories) | |
| Overall length in mm | 7,295 |
| Overall width in mm | 2,278 |
| Overall height in mm | 2,835 |
| Technically permissible laden mass in kg | 3,500 (opt.: 3,700 / 4,500) |
| Mass in running order in kg approx. ^{1) / 4)} | 2,940 |
| Maximum payload in kg ²⁾ | 560 (opt.: 760 / 1,560) |
| Technically permissible towing weightbraked in kg ^{3) / 5) / 6)} | 2,000 |
| Seats | |
| Seats fitted with 3-point safety belt ⁴⁾ | 2 (3,4,5) |
| Couch behind driver (length × width) in mm | 1,190 × 405 |
| Couch behind passenger (length × width) in mm | 910 × 605 |
| Beds | |
| Overhead front bed (length × width) in mm | 1,870 × 1,300 |
| Rear bed (length × width) in mm | 2,000 × 1,380 |
| Filling quantities | |
| Fuel tank in l | 75 |
| AdBlue tank in l | 19 |
| Water tank content in l in driving / camping mode | 20 / 200 |
| Waste water tank in l | 130 |
| Gas supply in kg | 2 × 11 |
| Dimensions of the garage | |
| Maximum garage height in mm | 1,134 |
| Maximum available surface (length × width) in mm | 2,010 × 1,080 |
| Price in EUR, ex works, VAT not included | 81,820 |

1), 2), 3), 4), 5), 6) on page 23



EQUIPMENT PACKS

CP – Comfort Pack

| Code | Description | Weight in kg | Price EUR* |
|-----------------|---|--------------|------------|
| V8013090 | CP – Comfort Pack | 15 | |
| V3012014 | Panorama skylight (Midi-Heki) for living room instead of standard skylight | | 580 |
| V2082012 | Aguti comfort seats for driver and passenger, orientable and adjustable in height, in textile (instead of the original Fiat seats) | | 857 |
| V40540102 | Acoustic walls | | 1,563 |
| V4034015 | Comfort mattress incl. Lattoflex system for rear bedroom | | 580 |
| V5013613 | Intuitive light concept, (motion and light sensors for floor lighting at night and bathroom, automatic lighting of the living room, garage and water compartment) | | 1,034 |
| V30300J | Fly screen sliding door for body door | | 269 |
| | Total individual prices | | 4,883 |
| | Minus price advantage | | -2,706 |
| Package price | | | 2,177 |

DCP – Driving Comfort Pack

| Code | Description | Weight in kg | Price EUR* |
|-----------------|---|--------------|------------|
| V8040098 | DCP – Driving Comfort Pack | 1 | |
| V2096512 | Digital cockpit | | 916 |
| V2064511 | Electric parking brake | | 664 |
| V2054512 | Steering wheel and gear knob in leather | | 286 |
| V20610J | Steering wheel with radio controls | | 219 |
| V5029510 | Wireless phone charger | | 345 |
| V20190J | Battery main switch for chassis battery | | 345 |
| | Total individual prices | | 2,775 |
| | Minus price advantage | | -850 |
| Package price | | | 1,925 |

*Price EUR, VAT not included.

EQUIPMENT PACKS

MMP – Multimedia Pack

| Code | Description | Weight in kg | Price EUR* |
|--|---|--------------|------------|
| V8020012 | MMP – Multimedia Pack | 44,5 | |
| V5073013 | “Basic” radio precabling, incl. 4 loudspeakers and FM/DAB+ antenna | | 579 |
| V50400128 | Navigation system with 7" touch screen incl. radio with DAB+, Bluetooth (only in combination with radio precabling code V5073013) | | 1,252 |
| V5042010 | Rear view camera behind exterior lily logo | | 496 |
| V5054514 | Smart LED TV 32" incl. triple tuner, Bluetooth 4.2, in living room | | 1,504 |
| V50440116 | SAT system Oyster Cytrac Vision (without receiver) | | 2,933 |
| | Total individual prices | | 6,764 |
| | Minus price advantage | | -1,730 |
| Package price | | | 5,034 |
| Possible upgrades, surcharge to the MMP – Multimedia Pack: | | | |
| V50400129 | Navigation system with 9" touch screen incl. radio with DAB+, Bluetooth, instead of code V50400128 | 0 | 580 |
| V50440117 | Oyster Cytrac Twin satellite system (without receiver), instead of code V50440116 | 0,5 | 421 |

MP 1 – Multimedia Pack without SAT system

| Code | Description | Weight in kg | Price EUR* |
|--|---|--------------|------------|
| V8020026 | MP 1 – Multimedia Pack without SAT system | 21 | |
| V5073013 | “Basic” radio precabling, incl. 4 loudspeakers and FM/DAB+ antenna | | 579 |
| V50400128 | Navigation system with 7" touch screen incl. radio with DAB+, Bluetooth (only in combination with radio precabling code V5073013) | | 1,252 |
| V5042010 | Rear view camera behind exterior lily logo | | 496 |
| V5054514 | Smart LED TV 32" incl. triple tuner, Bluetooth 4.2, in living room | | 1,504 |
| | Total individual prices | | 3,831 |
| | Minus price advantage | | -994 |
| Package price | | | 2,837 |
| Possible upgrade, surcharge to the MP1 Pack: | | | |
| V50400129 | Navigation system with 9" touch screen incl. radio with DAB+, Bluetooth, instead of code V50400128 | 0 | 580 |

WP – Winter Pack

| Code | Description | Weight in kg | Price EUR* |
|-----------------|--|--------------|------------|
| V8031020 | WP – Winter Pack | 49 | |
| V5028014 | Warm water heating with thermostat. control, heating cartridge and touch screen panel (independent heating circuit in the rear bedroom) | | 2,328 |
| V5062010 | Engine heat exchanger (uses the engine cooling water to heat the living area, only in combination with warm water heating code V5028014) | | 832 |
| V30480J | Double-glazed window for driver and passenger windows | | 832 |
| | Total individual prices | | 3,992 |
| | Minus price advantage | | -891 |
| Package price | | | 3,101 |

PK – Premium Kitchen

| Code | Description | Weight in kg | Price EUR* |
|-----------------|---|--------------|------------|
| V4029510 | PK – Premium Kitchen | 25 | |
| V40310131 | Compressor drawer fridge 138 l. , incl. 12 l. separate freezing compartment | | 1,235 |
| V4016510 | Restaurant-grade containers for compressor drawer fridge | | 101 |
| V4050012 | Surface of mineral material | | 899 |
| V40540102 | Extension for kitchen work top | | 193 |
| V4029810 | Electrical lift for kitchen incl. indirect lighting and 230 V socket | | 1,059 |
| | Total individual prices | | 3,487 |
| | Minus price advantage | | -1,832 |
| Package price | | | 1,655 |

*Price EUR, VAT not included.

OPTIONAL FEATURES

Chassis

| Code | Description | Weight in kg | In package | Price EUR* |
|------------|--|--------------|------------|------------|
| V100601421 | Fiat Ducato Light 3,5 t., 160 HP | 15 | | 1,782 |
| V100601422 | Fiat Ducato Light 3,5 t., 180 HP | 16 | | 3,690 |
| V100601423 | Fiat Ducato Maxi 4,5 t., 140 HP (AMC 45 H) | 25 | | 1,740 |
| V100601424 | Fiat Ducato Maxi 4,5 t., 160 HP (AMC 45 H) | 40 | | 3,522 |
| V100601425 | Fiat Ducato Maxi 4,5 t., 180 HP (AMC 45 H) | 41 | | 5,429 |
| V201103700 | Weight upgrade to 3,7 t. (not available in combination with Fiat Ducato Maxi) | 0 | | 219 |
| V201103500 | Reduction of total weight to 3,5 t. (only available in combination with Fiat Ducato Maxi) | 0 | | 219 |
| V2096512 | Digital cockpit | 0 | DCP | 916 |
| V2064511 | Electric parking brake | 0 | DCP | 664 |
| V20190J | Battery main switch for chassis battery | 0 | DCP | 345 |
| V7002810 | Tyre sealant with compressor (Fix + Go) | 8,5 | | 117 |
| V20420A | Automatic gear box ZF AT9 | 18 | | 3,101 |
| V2007111 | Tow-bar (detachable) incl. rear traverse extension | 64 | | 1,387 |
| V2045510 | Rear steady legs (manual) | 9 | | 272 |
| V2082012 | Aguti comfort seats for driver and passenger, orientable and adjustable in height, in textile (instead of the original Fiat seats) | 0 | CP | 857 |
| V2082017 | Aguti comfort seats for driver and passenger incl. seat heating and lombart supports | 0,5 | | 646 |
| V2051090 | 90 l fuel tank | 14 | | 80 |
| V2077113 | LED headlights | 5 | | 1,084 |
| V2062113 | LED front fog light | 1,5 | | 251 |
| V2054512 | Steering wheel and shift knob in leather | 0 | DCP | 286 |
| V20610J | Steering wheel with radio control | 0,5 | DCP | 218 |
| V2021044 | 18" alloy wheels for Fiat Ducato Maxi AMC 45H, matt black (only available in combination with Ducato Maxi) | 17 | | 2,261 |
| V5029510 | Wireless phone charger | 0,5 | DCP | 345 |



V20420A Automatic gear box



V2021044 18" alloy wheels

CP: Comfort Pack, DCP: Driving Comfort Pack, WP: Winter Pack

*Price EUR, VAT not included.

Exterior

| Code | Description | Weight in kg | In package | Price EUR* |
|----------|--|--------------|------------|------------|
| V8011311 | ClouLine Design (painted radiator grille with chrome elements, chrome elements around the front lights and on the back) | 2 | | 740 |
| V7004511 | Exterior chrome parts coated in black, matt (surcharge to Clou Line Design, code V8011311) | 0 | | 580 |
| V7004039 | Exterior decoration Maxi “Carbon Optic” (decor foil on sidewall) | 1,5 | | 1,336 |
| V7004037 | Exterior decoration Maxi “Champagne matt” (decor foil on sidewall) | 1 | | 1,252 |
| V7004035 | Exterior decoration Maxi “Lava Orange” (decor foil on sidewall) | 1 | | 1,252 |
| V7004038 | Exterior decoration Maxi “Rhodium silver” (decor foil on sidewall) | 1 | | 1,252 |
| V7004116 | Accent decoration “Carbon Optic” (striping on front and rear panels, skirts and mirrors) | 0,5 | | 672 |
| V7004117 | Accent decoration “Champagne” (striping on front and rear panels, skirts and mirrors) | 0,5 | | 672 |
| V7004114 | Accent decoration “Lava Orange” (striping on front and rear panels, skirts and mirrors) | 0,5 | | 672 |
| V7004113 | Accent decoration “Carmine Red” (striping on front and rear panels, skirts and mirrors) | 0,5 | | 672 |
| V3003028 | Exterior paint in “Eifel grey” instead of white, white roof (only available in combination with Clou Line Design, code V8011311) | 2 | | 5,874 |
| V3009011 | Fresh-air fan above kitchen instead of standard skylight (not in combination with roof air conditioner code V5033014) | 1 | | 290 |
| V30480J | Double-glazed window for driver and passenger windows | 14 | WP | 832 |
| V3011014 | Panorama skylight (Midi Heki) over rear bedroom instead of standard skylight | 8 | | 580 |



V3009011 Fresh-air fan



V2092511 Exterior pull-out storage case



V3003028 Exterior paint in “Eifel grey”

OPTIONAL FEATURES

Exterior

| Code | Description | Weight in kg | In package | Price EUR* |
|-----------|---|--------------|------------|------------|
| V3012014 | Panorama skylight (Midi-Heki) for living room instead of standard skylight | 8 | CP | 580 |
| V3031510 | Garage door on driver's side (left, same size as passenger side) | 7 | | 790 |
| V30620 | Shelf system in the garage, on driver's side (left) | 1 | | 244 |
| V2092511 | Exterior pull-out storage case on passenger's side (right side) | 10 | | 503 |
| V2092510 | Exterior pull-out storage case on driver's side (not in combination with gas tank, code V5025511) | 11 | | 503 |
| V20391J | Heated windscreen | 1 | | 584 |
| V30522170 | Awning 5 m (manual) incl. LED lights | 61 | | 1,462 |
| V30522155 | Awning 4,25 m (manual) incl. LED lights | 41,5 | | 1,256 |

Interior

| Code | Description | Weight in kg | In package | Price EUR* |
|------------|--|--------------|------------|------------|
| V40540102 | Acoustic walls | 3 | CP | 1,563 |
| V7006011 | Fire extinguisher | 3 | | 100 |
| V30300J | Fly screen sliding door for body door | 4 | CP | 269 |
| V4016510 | Restaurant-grade containers for compressor drawer fridge (only available in combination with premium kitchen, code V4029510) | 0,5 | PK | 101 |
| V4018016 | Doors for ceiling cupboards in "walnut planked" (dark walnut) | 0 | | 0 |
| V4018015 | Doors for ceiling cupboards in "breeze oak" (light oak) | 0 | | 0 |
| V4018014 | Doors for ceiling cupboards in "white planked" (white mat) | 0 | | 0 |
| V3037210 | Rear wall panelling in bedroom in carbon look | 0 | | 815 |
| V3037211 | Rear wall panelling in bedroom in petrol colour | 0 | | 408 |
| V3037212 | Rear wall panelling in bedroom in olive green | 0 | | 408 |
| V40220M | Front folding bed (manual) with slatted frame and comfort mattress | 30 | | 748 |
| V5013613 | Intuitive light concept (motion and light sensors for floor lighting at night and bathroom, automatic lighting of the living room, garage and water compartment) | 0 | CP | 1,034 |
| V5030090 | 230 V capsule coffee machine | 2 | | 125 |
| V4034015 | Comfort mattress incl. Lattoflex system for rear bedroom | 0 | CP | 580 |
| V40310131 | Compressor drawer fridge 138 l., inclusive separate freezing compartment 12 l. (only available in combination with premium kitchen, code V4029510) | 13 | PK | 1,235 |
| V4029011 | Extension for kitchen work top (only available in combination with premium kitchen, code V4029510) | 2,5 | PK | 193 |
| V403001005 | Kitchen drawers in "walnut planked" (dark walnut), incl. drawers under the rear bed in the model 7.3 F | 0 | | 0 |
| V403001004 | Kitchen drawers in "breeze oak" (light oak), incl. drawers under the rear bed in the model 7.3 F | 0 | | 0 |

CP: Comfort Pack, **WP:** Winter Pack, **PK:** Premium Kitchen

*Price EUR, VAT not included.

Interior

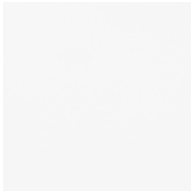
| Code | Description | Weight in kg | In package | Price EUR* |
|------------|---|--------------|------------|------------|
| V403001003 | Kitchen drawers in "white planked" (white mat), incl. drawers under the rear bed in the model 7.3 F | 1 | | 0 |
| V4050012 | Surface of mineral material in the kitchen (only available in combination with premium kitchen, code V4029510) | 4 | PK | 899 |
| V4029810 | Electrical lift for kitchen incl. indirect lighting and 230 V socket (only available in combination with premium kitchen, code V4029510) | 5 | PK | 1,076 |
| V4044024 | Seat bench on driver's side (left) turnable into a L-shape lounge with 2 additional seatbelts, incl. folding & sliding table (rail system on the floor) | 45 | | 1,126 |
| V4048017 | Sliding folding table incl. floor rails instead of round table | 3 | | 240 |
| V4062612 | Additional seatbelt in seat bench on passenger's side (right), incl. ISOFIX, registration for 3 persons or for 5 persons with code V4044024, L-shape lounge | 37 | | 753 |
| V60260J | Additional mattress between single beds | 7 | | 164 |
| V6020012 | Floor carpet in the driver's cab | 4 | | 124 |



V4018016
Walnut planked



V4018015
Breeze oak



V4018014
White planked



V40220M Front folding bed

Heating, Air conditioning

| Code | Description | Weight in kg | In package | Price EUR* |
|----------|---|--------------|------------|------------|
| V5028013 | Truma air heating with Combi 6 E heating elements (1,800 W) | 0 | | 566 |
| V5028014 | Warm water heating with thermostat. control, heating cartridge and touch screen panel (independent heating circuit in the rear bedroom) | 29 | WP | 2,328 |
| V5062010 | Engine heat exchanger (uses the engine cooling water to heat the living area, only in combination with warm water heating code V5028014) | 6 | WP | 832 |
| V5028210 | Extended heating for warm water heating in the driver's cab (original Fiat ventilation connected with warm water heating, only in combination with warm water heating code V5062010 and engine heat exchanger code V5028014, operable over separate touch screen panel) | 8,5 | | 1,213 |
| V5020012 | Floor heating (only available in combination with code V5028014, warm water heating) | 5 | | 496 |
| V5033014 | Roof air conditioner instead of standard skylight (2,400 W cooling capacity, 1,700 W heating power, not available in combination with fresh-air fan, code V3009011) | 36 | | 1,848 |
| V5028810 | Inet Box to control the heating and/or roof air conditioning (SIM card needed, not included) | 1 | | 492 |

OPTIONAL FEATURES

Gas, Water, Sanitary

| Code | Description | Weight in kg | In package | Price EUR* |
|----------|--|--------------|------------|------------|
| V50100J | Exterior shower in garage | 1 | | 248 |
| V5025210 | Box storage system in the garage instead of gas compartment (only available in combination with code V5025511, gas tank) | -1 | | 0 |
| V50010J | Electrical discharge for waste water tank | 0 | | 134 |
| V5049510 | Camera in waste water tank, with display via double DIN monitor on the dashboard (only available in combination with navigation system, code V50400129 or V50400128) | 1 | | 332 |
| V5053013 | 120 l fixed toilet tank with electrical function and ceramic toilet bowl | 37 | | 1,004 |
| V50230J | Gas supply connection in side wall | 1 | | 164 |
| V50250J | Gas filter (two units) for camping gas bottles (only in combination with Truma DuoControl, code V5026013) | 1 | | 171 |
| V5025511 | 50 l / 20 kg gas tank incl. display | 37 | | 1,512 |
| V5053015 | Ceramic bowl for cassette toilet (standard with code V5053013 fixed toilet tank) | 10 | | 164 |
| V50270J | Narcotic gas alarm | 3 | | 387 |
| V3064012 | SOG toilet ventilation | 0 | | 248 |
| V5026013 | Truma DuoControl CS gas flow control | 2 | | 240 |
| V5003510 | Hose waste water disposal in storing tube | 0 | | 151 |



V5025210 Box storage system in the garage



V5053013 Fixed toilet tank



V5025511 50 l / 20 kg gas tank



V5012612 Lithium batteries



V5054514 Smart LED TV 32"



V5047510 Sonos sound bar

On-board technology

| Code | Description | Weight in kg | In package | Price EUR* |
|----------|--|--------------|------------|------------|
| V5005012 | Alarm system (body, garage door, control of the interior rooms can be switched off) | 1 | | 995 |
| V5033810 | 70 A combi charger with 1,600 W inverter, 12 to 230 V (only in combination with second battery, code V5012414) | 12 | | 2,345 |
| V5012514 | Additional 100 AH lithium battery (total 2) | 17 | | 1,420 |
| V5012612 | 2 × 100 AH lithium batteries (total 3) | 33 | | 2,841 |
| V20650J | Backup warning | 0 | | 319 |
| V5047010 | Cabling for solar system | 0,5 | | 177 |
| V5047024 | 2 × 110 W solar system | 20 | | 1,840 |
| V5050510 | 230 V socket in the garage | 0,5 | | 193 |
| V3071017 | Central locking for body and garage door(s) | 1 | | 662 |

Radio, TV, Satellite, Navigation

| Code | Description | Weight in kg | In package | Price EUR* |
|-----------|--|--------------|------------|------------|
| V5071510 | LTE and WiFi Router for own network with large operating range (SIM card needed, not included) | 1 | | 1,084 |
| V50400129 | Navigation system with 9" touch screen incl. radio with DAB+, Bluetooth (only in combination with radio precabbling code V5073013) | 3 | | 1,832 |
| V50400128 | Navigation system with 7" touch screen incl. radio with DAB+, Bluetooth (only in combination with radio precabbling code V5073013) | 3 | MMP + MP1 | 1,252 |
| V5073013 | "Basic" radio precabbling, incl. 4 loudspeakers and FM/DAB+ antenna | 6 | MMP + MP1 | 579 |
| V5042010 | Rear view camera behind exterior lily logo (display not included) | 1 | MMP + MP1 | 496 |
| V50440116 | SAT system Oyster Cytrac (without receiver) | 23,5 | MMP | 2,933 |
| V50440117 | SAT system Oyster Cytrac Twin (without receiver) | 24 | | 3,353 |
| V5054514 | Smart LED TV 32" incl. triple tuner, Bluetooth 4.2, in living room | 11 | MMP + MP1 | 1,504 |
| V5055011 | Smart LED TV 22" in bedroom | 5 | | 748 |
| V5047510 | Sonos sound bar incl. 250 W inverter (only available in combination with LTE Router, code V5071510) | 4,5 | | 622 |

MMP: Multimedia Pack, **MP1:** Multimedia Pack without SAT system

*Price EUR, VAT not included.

OPTIONAL FEATURES

Upholstery

| Code | Description | Weight in kg | In package | Price EUR* |
|--|----------------------------------|-----------------|---------------|---------------|
| Seat cushions including driver and passenger's seats | | | | |
| V100707002 | Shadow (textile, anthracite) | 0 | | 0 |
| V100707006 | Grey (textile, grey) | 0 | | 0 |
| V100707007 | Green (textile, green) | 0 | | 0 |
| V100707003 | Temptation (leather, beige) | 2 | 2,008 | |
| V100707004 | Attraction (leather, anthracite) | 2 | 2,008 | |
| V100707008 | Sensation (leather, brown) | 2 | 2,008 | |
| Backrest cushions, style "Kiss" | | | | |
| V100807013 | Grand Cru no. 1 | 0 | | 0 |
| V100807015 | Grand Cru no. 3 | 0 | | 0 |
| V100807016 | Grand Cru no. 4 | 0 | | 0 |
| V100807018 | Grand Cru no. 6 | 0 | | 0 |
| V100807019 | Grand Cru no. 7 | 0 | | 0 |
| V100807022 | Grand Cru no. 10 | 0 | | 0 |
| V100807033 | Grand Cru no. 14 | 0 | | 0 |
| V100807034 | Grand Cru no. 15 | 0 | | 0 |
| V100807035 | Grand Cru no. 16 | 0 | | 0 |
| V100807026 | Beige leather | 2 | 832 | |
| V100807027 | Anthracite leather | 2 | 832 | |
| V100807037 | Brown leather | 2 | 832 | |

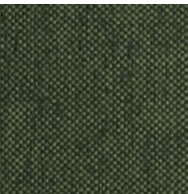
Seat cushions including driver and passenger's seats



Shadow
(textile, anthracite)



Grey
(textile, grey)



Green
(textile, green)



Temptation
(leather, beige)



Attraction
(leather, anthracite)



Sensation
(leather, brown)

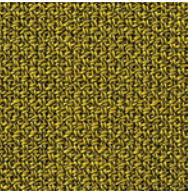
Backrest cushions



Grand Cru no. 1



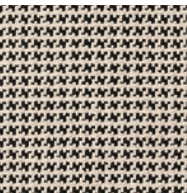
Grand Cru no. 3



Grand Cru no. 4



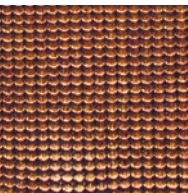
Grand Cru no. 6



Grand Cru no. 7



Grand Cru no. 10



Grand Cru no. 14



Grand Cru no. 15



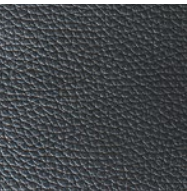
Grand Cru no. 16



Beige leather



Brown leather



Anthracite leather

*Price EUR, VAT not included.

IMPORTANT INFORMATION



¹⁾ The “mass in running order” according to EU directive accepted in VO (EU) no. 1230 / 2012 includes: the empty mass with standard equipment, driver (75 kg), filling quantities for fuel (90 %), fresh water in driving mode (20 l) and a 100 % filled gas bottle and connecting cables. Differences as part of the manufacturer tolerance are possible and allowed.

²⁾ The payload is the difference between the technically permissible laden mass and the total effective vehicle mass. Weights of the optional equipment have to be added to the “Mass in running order”.

³⁾ The permissible total towing weight must not exceed 5,500 kg for AMC 35 L chassis and 6,000 kg for maxi chassis.

⁴⁾ Further persons are allowed to ride along as far as the technically permissible laden mass is not exceeded and respective seats with safety belts are present.

⁵⁾ The indication regarding the technically permissible towing weight braked represents a maximum value, which depends on the real vehicle mass incl. persons and loading. The technically permissible maximum towable mass shall not be in any case exceeded.

⁶⁾ All information concerning the total towing weight is valid for a maximum incline of 12 % at an uphill start. Weight upgrade (Fiat Ducato Maxi AMC 45H) does not raise the total towing weight.

Due to the different materials, manufacturing procedures and light conditions, colour deviations can occur on bodywork and attachment parts. Colour deviations do not authorise complaints or warranty claims.

All the dimensions and weights are rounded figures and can vary according to the different homologation directives.

Important information

This brochure is subject to change without notice. After the copy deadline of this price list (03/2021) changes as to models and products, floor plans, technical data, equipments, etc. may have occurred. The illustrations also contain optional features, and/or accessories which are not included in the standard equipment and decoration respectively which is not included in Niesmann+Bischoff range of supply. Descriptions may have been garbled due to graphic conversion, photographic processing or technical reasons. All data on range of supply, appearance, performance, weights and measures, as well as fuel consumption of the vehicles are in compliance with the knowledge existing at the time of the copy deadline and are valid for all purchase and licensing in the Federal Republic of Germany. Deviations of the values within a range of $\pm 5\%$ are possible. The measures of the mattress may slightly vary from the given bed measures. E. g. data on the capacity of the refrigerators refer to producer information. Prices for optional features are only valid when installed during production. In case of subsequent installation additional installation and servicing expenditures are accrued at cost. We reserve the right to change prices, construction and equipment without notice. With the issue of this brochure all previously issued information and price lists become void.

Publisher

Niesmann+Bischoff GmbH
Clou-Straße 1, 56751 Polch
T +49 2654 933-0
F +49 2654 933-100
M info@niesmann-bischoff.com
W niesmann-bischoff.com

Concept + Design

BUTTER. GmbH, Düsseldorf

Photography

mooi Studio, Mendig
BUTTER. GmbH, Düsseldorf

Tech. Presentation + Renderings

Studio SYN, Rüsselsheim

Last updated: 01.03.2021

Design diversity

Personality comes from within. The same applies to your iSmove. How would you like yours to look? Would you prefer classic-chic or something a bit bolder? No matter what decision you make, you will always feel right at home, as the fabrics and materials are all of high quality.

Build your very own iSmove now at:

<https://configurator.niesmann-bischoff.com>