

ERWIN HYMER CENTRE

Travelworld



MAGAZINE

IN THIS ISSUE

PAGE 13

CARADO
V337 DELIVERS
HUGE VALUE

PAGE 16

REVAMPED
DETHLEFFS ESPRIT
PERFECT FOR YEAR-
ROUND TRAVELS

PAGE 24

BLUE IS THE
COLOUR WITH
HYMER FREE
EVOLUTION

PAGE 26

INNOVATION
AND CREATIVITY
OOZES IN THE
OUTSTANDING iMOVE

PAGE 35

MOTORHOMES.SHOP
ONLINE PARTS &
ACCESSORIES

ERWIN HYMER CENTRE

Travelworld



MEET THE TEAM



Nick Barker
Sales Manager



Jake Macquarie
Sales Controller



Karl Hudson
Sales Executive



Stephen Baskerville
Sales Executive



Ryan Hadley
Sales Executive



Adrian Smith
Sales Executive



Martin Lycett
Sales Executive

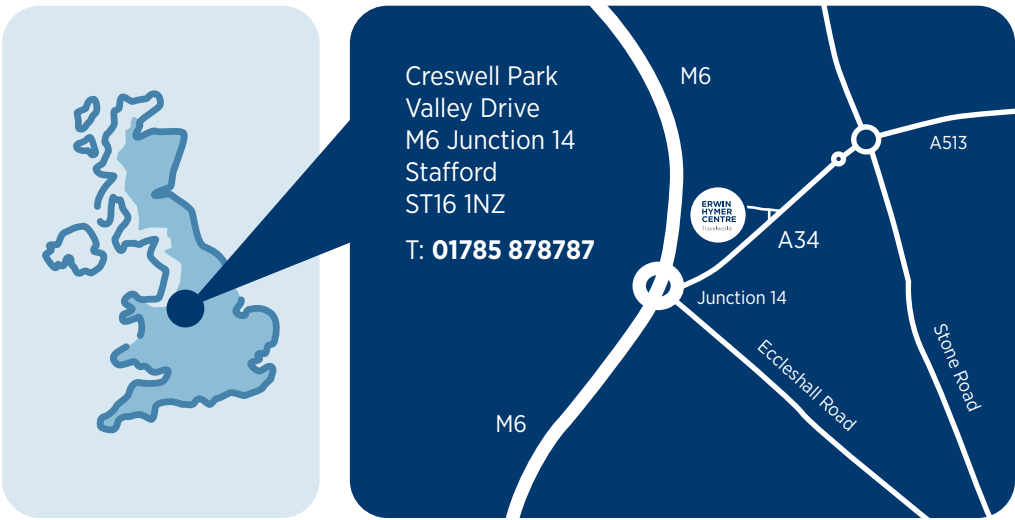


Frank Draper
Sales Executive



OUR LOCATION

T: 01785 878787
motorhomes.co.uk



HITTING TOP GEAR IN YOUR MOTORHOME SEARCH



In life, there are many natural associations. Mention Downing Street and the phrase Prime Minister won't be far behind.

The same applies to Wimbledon and Centre Court.

So it is when discussing motorhome retail excellence, all roads lead to Erwin Hymer Centre Travelworld.

For more than 40 years, we have become established as the UK's No 1 choice for those looking to purchase a motorhome or campervan.

To be found a stone's throw off junction 14 of the M6, it is no surprise that – in normal times at least – crowds flock in their thousands every month to our showroom to get the inside track on the latest in motorhome innovation and technology and to view the most up-to-date models.

Of course, we have had to make changes to the way we operate since March 2020 to meet the ever-changing demands of the coronavirus environment but our commitment to providing outstanding customer service and expert insight is unwavering.

That's because Travelworld is more than just a business. It's a labour of love. A multi-generational family business for which supplying vehicles to empower people to explore the great outdoors is the lifeblood.

Headed up by managing director Ross Edwards, the team work tirelessly to provide the best possible showcase for premium German brands – HYMER, Carado, Niesmann+Bischoff and Dethleffs.

Whether it's welcoming you into our well-populated showroom or guiding

you on a virtual walk-through, the dedicated, knowledgeable and enthusiastic team is ready to answer any questions to help unlock the perfect travelling companion for you and your family.



Ross Edwards

Managing Director

EXCELLING WITH SERVICE AT EVERY LEVEL



Once you have found your dream vehicle, our outstanding Service Centre and MOT testing facility is ready to deliver on any aftersales requirements.

Our servicing team is dedicated to keeping your motorhome in peak condition for the next thrilling adventure.

Our 42-point inspection leaves no stone unturned, covering everything from gas and electric systems, a water check and a comprehensive body damp assessment, while the brakes, tyres, suspension and heating application are thoroughly examined.

A recent addition to our services is a fully equipped MOT testing station.

We are one of the few UK dealerships to offer such a service on-site and a significant investment has been made to include an MOT certified four-post hydraulic ramp and a brake testing and axle weight measuring rolling road.

Whatever work is carried out, it comes with a guarantee through our membership of the Approved Workshop Scheme, a joint initiative between the National Caravan Council, The Caravan and Motorhome Club and The Camping and Caravanning Club.

Put simply, this is the gold standard in motorhome and caravan servicing and means any work Erwin Hymer Centre Travelworld carries out on your beloved motorhome will not affect the warranty.

CONTACT US

We hope this magazine will provide many of the answers to your burning motorhome questions, but we are sure there will be some additional queries.

Please don't hesitate to contact us on service@motorhomes.co.uk and our team will be on hand to assist.



ERWIN HYMER CENTRE

Travelworld



A CELEBRATION OF 10 YEARS IN PARTNERSHIP WITH HYMER



COMING SOON | 10 YEAR ANNIVERSARY EVENT | 22ND – 27TH FEBRUARY 2022

ERWIN HYMER CENTRE Travelworld

Creswell Park, Valley Drive, M6 Junction 14, Stafford, ST16 1NZ



motorhomes.co.uk

All-new Globetrotter XLi turns heads

Sporty, dynamic and luxurious, the Dethleffs Globetrotter XLi is one of the most exciting new models of the year.

As if the Globetrotter wasn't impressive enough already, this XLi model is an enhanced version of the flagship A-class range.

Unlike almost any other premium motorhome, the Globetrotter XLi combines spacious living with design and dynamics.

The first-rate premium broad-gauge low-frame chassis delivers real driving pleasure and accentuates the sporty design, especially on winding country roads where it demonstrates impressive track

stability and minimised roll behaviour.

There are plenty of new treats to enjoy in the XLi, including the 140bhp engine as standard, which can be optioned to 160bhp or 180bhp. There's an attractive new rear moulding design which really catches the eye.

Also new as standard is central locking for the cab, body door and rear garage flaps, and the rear garage has been fitted with a smart push-to-open function.

The kitchen benefits from an all-new mineral surface, and the drawers all have central locking.

All of these new additions come alongside a raft of features as standard, including ALDE heating, an electric lifting bed, a 141L fridge and low single beds for convenient access.

And for those who want to take their Globetrotter XLi to an even higher level, there are five new packages to choose from: Chassis, Travel, GT, Light Moments and the Lithium I and II.

Personalise this amazing motorhome to suit your needs, whether that's with ORC 18" alloy wheels in black, a 32" TV, a 177L fridge, a panoramic skylight in the lounge, a weight upgrade to 5,400kg or lithium batteries.

The outstanding Globetrotter XLi excels in every category and reflects the brand values of quality, strength and performance – all within an eye-catching, family-friendly frame.

[The Globetrotter XLi really is a model not to be missed.](#)

Carado's anniversary special

Carado is celebrating a special anniversary in 2021 and it is determined to pass that feelgood factor on to its customers.

The Edition15 range represents a special edition pack to enable those searching for even greater levels of luxury to supplement their vehicle with extra features.

Arguably the most exciting development of the Edition15 package is the pop-top roof.

This can change the entire

complexion of a family holiday, not least because it can add two sleeping berths and increases the functionality of the vehicle. A first for Carado's camper van range and a move that is sure to be well received.

The Edition15 provides a generous FIAT 140bhp chassis, making it a pleasure to be on the road whatever the conditions or terrain.

The range of chassis colours now includes black for the first time, while 16" alloy rims adds yet more aesthetical value and complements the exceptional build quality.

A newly redesigned dashboard, a change in the front LED lights, the Style Pack and Traction+ packages and a pre-cabling reversing camera all feature in the Edition15 to maximise the enjoyment of every moment of your driving experience.

When it comes to the interior, the Nebula upholstery brings an exclusive



feel throughout the vehicle while space will never be a concern thanks to the availability of a 4m awning.

The Edition15 package is available on a range of Carado's motorhomes and camper vans and the team at Travelworld will be happy to advise further.

The Edition15 range is the second anniversary of Carado's anniversary offerings following on from the 'Best of 10' Edition launched to mark a decade in existence.

[Like a fine wine, Carado continues to find improvements with age.](#)



KEEP AN I ON THIS IN 2022

A new year will trigger a new era for Carado’s integrated I Series range.

In 2022, Carado will give one of its flagship ranges a significant facelift and enhance still further a set of motorhomes which already deliver when it comes to luxury comfort. Space and storage aplenty, high quality interiors, an ultra-comfortable bedroom environment, a sizeable bathroom and ergonomic kitchen, it’s not easy to spot where significant improvements can be made.

The Carado team, however, has developed a vision to make its I Series even more attractive to those selecting a new motorhome.

The list of improvements planned for 2022 are as extensive as they are exciting.

Determined to provide the most comfortable driving experience possible, the enhanced I Series motorhomes will feature cruise control and manual cab air conditioning.

With the aim of bringing a genuine automotive feel to the vehicle, the transformation of the front will resemble an A Class.

There will be LED headlights and turn signals, a high-quality PU radiator grille and a headlight cover.

The sought-after Style Pack Carado offers will come as standard, ensuring each new I Series motorhome will be fitted with a leather steering wheel and leather trim on the gear change option.

And to make the motorhome as



practical and functional as possible, the dashboard has undergone a major transformation.

A host of new elements have been introduced, including a card or coin holder, a drinks holder, a generously sized central shelf, a phone holder and folding passenger locker with an organisation system.

It doesn’t end there – a series of options are also available, ranging from a full digital package, an electric park brake, wireless phone charger and automatic air conditioning.

Just when you thought the Carado I Series couldn’t get any better, along comes these raft of changes to open up a whole new motorhome experience.

DETHLEFFS UPPING THE ANTE WITH ALPA

If A has been standing for awesome when it comes to the Dethleffs Alpa Class then I will very much be for incredible.

Over recent years, the Alpa A 6820-2 has become regarded as one of the most sought-after motorhomes of its kind on the market.

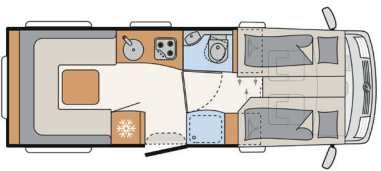
Spacious and stylish in equal measures and beautifully crafted with the finest upholstery, there is so much to admire about the existing model.

Dethleffs, however, is displaying its determination to continue producing an innovative and enhanced offering and is introducing the upgraded I range in 2022.

The impact will be immediately obvious, with a new integrated front and the option to have the cab in silver metallic instead

of the traditional white.

At 7.5m in length, the I layout will be a slightly larger version than its predecessor, making the U-shaped lounge even more spacious for those relaxing evenings.



The I range will also include the ultimate in bedtime comfort thanks to electric two-sleeper single beds, featuring two large wardrobes underneath to provide even more storage.

New cosy floor lamps will add to the luxurious interior feeling while a separate changing area independent of both the living

room and bedroom ensures the extra space is fully capitalised on.

And on those chillier evenings, the Dethleffs Lifetime Plus package means standard warm water heating and heated double floor comes as standard to help defy the cold temperature.

From an engineering point of view, there is also much to admire. The Heavy Duty 140bhp Chassis now comes as standard, with the option to upgrade to 160 or 180bhp engines, while there is a reinforced spring for the front axle.

All of which makes the new Alpa I6820-2 easy to handle and one of THE vehicles to see the world with in 2022.

Dethleffs are certainly upping the ante – and the Alpa!



2022 BIG YEAR FOR POPULAR GLOBEBUS

Dethleffs has revealed some exciting interior and exterior revisions to its popular Globebus model.

The Globebus is the most compact model within the Dethleffs range, making it a good choice for city trippers and those wanting to explore winding roads.

And the 2022 iteration is sure to attract attention thanks to some significant enhancements.

The interior has been reworked, perhaps most strikingly with new handleless overhead lockers, complete with softclose technology.

There’s also now a side kitchen with a two-flame hob and large work surface, thanks to a smart rearrangement.

The kitchen fronts have been made flat and there’s an integrated waste bin, as well as an upgraded standard refrigerator.

There’s a new entrance door with grey inner lining, and the lounge has been switched to the in-fashion L-shape layout.

You’ll appreciate the improved 150mm mattress thickness come bedtime, while a roof fan has replaced a skylight in the bathroom.

Blackout blinds in the driver’s cab now come as standard, as do 15” steel wheels, including wheel trims.

The changes aren’t limited to the interior. Outside, the Globebus benefits from lightweight GRP walls and roof. The rear garage, meanwhile, now comes with an anti-slip surface and a new turnbuckle lock.

There’s also been a raft of changes to the options on the Globebus, giving you the opportunity to further tailor the motorhome to your needs.

All of this means the Globebus is sure to be as in-demand as ever as motorhomers plan next year’s adventures.



THE CLEVER

CLASSY CARADO CV 540 IS PERFECT FOR COUPLES

Comfortable, compact, cosy and classy, the Carado Camper Van 540 is the perfect travelling companion for a couple or small family taking to the road.

At 5.41m, this vehicle is small enough to be used comfortably in routine day-to-day life at home, but it is for the special holiday experience where it truly comes into its own, with the Clever+ package providing additional luxurious touches throughout.

Suitable for four passengers, the combination of the reliable Fiat Ducato chassis, a 2.3 140 bhp Fiat engine and 9 speed ZF automatic transmission means the blueprint for a faultless motorhome experience is clear for all to see.

The external view of the 540 provides a sleek and modern look, aided by the eye-catching Campovolo Grey exterior and 16-inch alloy wheels, with the option to add an awning to create extra space whichever delightful location you down tools for the evening.

Internally, the Nebula upholstery brings an exclusive feel to all areas, with the dirt-repelling fabric particularly useful when travelling with youngsters.



While this is the smallest of Carado's camper van range, the amount of storage in general is a pleasant surprise, a maximum payload of 772kg paying testament to that and meaning awkward decisions over which items to leave at home can be easily avoided.

Swivelling driver and passenger seats reverse onto a small but effective table to create a front lounge for a short break from travelling or evening board game entertainment, while a two-burner gas hob, sizeable fridge and ample work space provide more than enough resource to create culinary delights at any time of the day.

The integrated bathroom is a masterclass in how to make the most of the space available.

As is to be expected given the overall size of the camper van, the area is slightly on the small side but an all-in-one unit of spacious shower cubicle and fixed wash basin units attends to every need and utilises the space brilliantly.

A comfortable and well sized sleeping area guarantees a peaceful end to the day's adventures while there is additional storage capacity beneath the transverse rear fixed bed.

And then there are the raft of the additional benefits which accompany the Clever+ package provided exclusively by Carado.

The long list of additional features include folding black out blinds in the cab and a pre-wired reversing camera, all of which are designed to make your journeys more convenient, comfortable and memorable.

All in all, the Carado CV 540 provides the perfect vehicle for adventures on the road for couple or small families and is outstanding value for money at £48,542 (including VAT). In this case, small is very much beautiful.

CARADO T459 TAKES POPULAR BRAND TO NEXT LEVEL

Carado has long led the way when it comes to pound-for-pound style and functionality – but the all-new T459 has raised the bar again.

The family friendly brand in the Erwin Hymer Group, Carado motorhomes have always been renowned for their build quality and practicality.

And any questions of plain design have now been banished by the classy T459 Clever + Edition models. There's nothing entry level left bar the price tag.

The improvements are obvious from the outside of the 7.4m vehicle, with all Clever + T models benefitting from a silver metallic Fiat cab, 16-inch alloy wheels and a full length awning which extends out 2.5 metres.

There's a Teleco satellite dish on the roof and the wiring is already conveniently installed for a reverse parking camera.

But it's the interior and the new layout which really makes the T459 stand above its competitors. Perhaps the most significant improvement is

also the most simple in the in-built, flush-fit window within the habitation door. This window has dramatically increased the amount of natural light within the vehicle and gives an impression of increased space.

The T459 is the first Carado to have the increasingly-trendy face-to-face lounge with settees opposing each other. This makes dining and relaxing far more comfortable but, crucially, the seats can be turned to be forward facing using steel-framed backrests, meaning it is still a four-seatbelt vehicle. The dining table can fold away to create more space when not in use.

This model benefits from the brand new Nebula upholstery and another touch of elegance is found in the cabinet ambient lighting which runs right through the lounge, kitchen and bathroom.

The kitchen has the oven and three-burner hob you'd expect – and you certainly won't be short of fridge space with an impressive 167 litres as standard.

There's a separate shower and toilet which can be cut-off with dividing doors and an island bed in the bedroom which offers good access either side, along with two roomy wardrobes. The rounded bed can be extended to 195cm with an infill and the drop-down bed over the lounge is easy to operate and particularly comfortable, thanks largely to plastic springs under the mattress.

The island bed means there is plenty of room in the heated, 524kg payload garage, which has a door on either side of the vehicle for easy access.

With the 2.3l engine offering 140bhp, there's plenty of power to fuel all your motorhome adventures, from the wide, open road to more remote destinations. When you are hooked up, the Truma combi system allows you to run the heating and water heating off the electrics to save gas.

With excellent driveability and stylish features, it's unlikely that you will find a better motorhome at the price point than a T459. In fact, it's more than a match for many vehicles significantly more expensive.



CARADO V337 DELIVERS HUGE VALUE



When it comes to value for money and practicality, few motorhomes can compare with the impressive Carado V337.

It's easy to see why this motorhome has proved so popular, particularly with those people who are looking to move up the ladder either from a touring caravan or a campervan.

At 2.14m in width, this semi-integrated vehicle benefits from the narrowness of a campervan but with the space and luxury of a motorhome. In many ways, it's the perfect halfway house for wannabe explorers.

Perhaps the most impressive aspect of this motorhome is the price tag. At £51,479, the V337 is extraordinary value for money – and most people will find it has everything they need without many add-ons.

Built on the tried and tested Fiat Ducato chassis, the V337 looks the business from the outside with its rounded corners. As you'd expect from a motorhome in the Erwin Hymer Group family, it's fully winterised with an aluminium skin, which will make

a huge difference if you plan to use the vehicle all-year round.

The garage is large enough for a couple of bikes, outside furniture, barbecue equipment and anything else you need for your travels, so you're unlikely to be facing the dilemma or what to leave at home. There's even heating, lighting and a main power point. The payload of the V337 is a comfortable 890kg.

It's clear that this vehicle is very solid and built to a high, German standard.

Electric drop down steps lead into the vehicle where the clever layout of this model becomes apparent, giving a stylish and relaxed feel. The 1.95m twin beds are well positioned in a stylish bedroom area, complete with good storage. The twin beds can be easily turned into a big double by inserting an extra cushion and using a small ladder rather than the stairs for access. The skylight and windows on each side make it a light and airy bedroom.



The L-shaped lounge benefits from plenty of natural light owing to the large over-cab sunroof. The swivel cab seats have armrests and there are a further two travel seats on the other side of the well-sized table. The table can be extended somewhat if required by simply inserting an extra piece, making it easily accessible from the driver's seat.



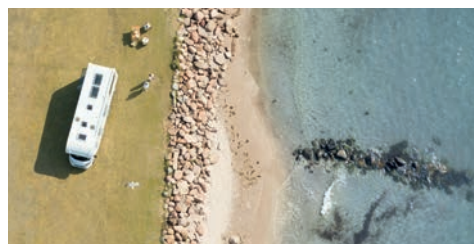
Often the trade-off with narrower motorhomes is the space between the bathroom and the kitchen – but the V337 offers decent aisle space. That gives plenty of room to access the oven and three-burner hob, which comes standard in the UK spec model, as well as the sink.

The 89-litre fridge/freezer is an impressive addition and all cupboards are soft close, which is a nice little touch of luxury.

To fit all of this in a sub-7m vehicle, there had to be a compromise somewhere and there isn't the room for a separate shower. Carado has developed a neat space-saving trick, though, where the wash basin and the wall pivots round to reveal a shower cubicle over the toilet.

As you'd expect from a Fiat base vehicle, it's a really comfortable drive. Cab air conditioning, cruise control and passenger airbag all come as standard.

The V337 certainly feels more premium than budget and is, unquestionably, a leader in its class. Few other models can compete with the build quality, style and features of this delightful motorhome.



DETHLEFFS TREND T 7057 EBL HITS THE STYLE/VALUE SWEET SPOT



The Dethleffs Trend range boasts of being the “perfect price/performance ratio” – and it’s hard to argue with that.

If you’re looking for a sub-7.5m motorhome with some snazzy touches in the £68,000 region, you’ll be hard-pressed to find a better option than the Trend T 7057 EBL.

The glorious thing about this model is the extensive list of specifications that come as standard on the UK models compared with its European counterpart.

Everything from a leather steering wheel to LED lighting, a TV bracket to an insulated water tank are the norm in the Blighty version, which is certain to cause an envious glance or two from over the Channel.

In fact, the spec list is so comprehensive that you’re unlikely to need to add many – if any – optional extras, meaning the price you see is most likely the price you pay.

The two key features of the Trend T 7057 EBL are the rear single beds and the face-to-face lounge.

The rear single beds offer roomy sleepy accommodation, accessed by a small step. And, should you wish, they can easily be transformed into a huge king-sized bed using an infill, though a ladder is now required to access.

Face-to-face lounges are growing in popularity. Here there are benches either side of a large split table, which can comfortably sit four people. The side-facing benches can, however, become travelling seats with a bit of manual labour.

Other than the opportunity to look your loved ones square in the eye over breakfast, the advantage of a face-to-face layout is you gain extra space in the kitchen area.

The Trend T 7057 EBL’s kitchen is fairly standard in that you get the oven/grill, three-burner hob and sink, but there is just a bit of extra room to manoeuvre, which is handy when you’re trying to collect a roast chicken from the oven.

A drop down bed is available and, unlike other models, this one is

electric, which makes the whole process much easier. The beds can be left made-up when finished, meaning guests can be ready to kip in seconds.

There is another Trend model below 7m, but the extra half a metre does make a difference in that it allows for a separate bathroom. The shower is on the one side, and the toilet on the other. There is a door which separates the front of the vehicle from the back to offer privacy.

There are Remis blinds throughout and a large fridge freezer, as well as a larger-than-normal door (70cn) to enter the motorhome, complete with central locking.

Built on the ever-popular Fiat low platform chassis, this model benefits from a very reasonable 454kg payload, which should be plenty for the average traveller.

Designing a motorhome is always a careful balancing act between style, function, size and price. Dethleffs has barely missed a beat with this impressive motorhome.

Revamped Dethleffs Esprit perfect for year-round travels

The stunning Dethleffs Esprit I 7150-2 EB is the headline news for the Erwin Hymer Group this year.

Re-launched for this season, the integrated Esprit I 7150-2 EB has undergone a significant re-design and stands proudly at the top of the Dethleffs range.

One key selling point of the Esprit I 7150-2 EB is its high winterisation characteristics, making it the ideal choice for year-round explorers and ski fanatics. This is primarily achieved through an aluminium skin as well as a full double floor with a depth of 26cm, which also creates handy storage areas.

There is also full warm water heating from industry leader Alde, and a garage measuring 105cm x 120cm, which is comfortably large enough for multiple pieces of ski equipment. The payload is 725kg.



The 7.81m-long Esprit I 7150-2 EB is available in four different layouts. This particular model reviewed here is the EB version,



which includes single beds to the rear, but the motorhome can also be optioned to have an island double at the back of the vehicle.

In similar vein, here we have an L-shaped lounge, but you could instead opt for the currently popular face-to-face sofas.

The new modern design is apparent as soon as you enter the vehicle, which includes many touches of luxury, including Noce Nagano top lockers - which appear almost metallic - and cab chairs with tall backrests and air suspension. There's even neat sun blinds provided for the cab side windows.

There is an electric drop-down bed above the cab measuring in at a very reasonable 200cm x 150cm. Beds can be left made-up, meaning you're ready to sleep within minutes of pushing the button.

The kitchen and lounge are well-sized - and not just in length and width. Headroom is at least 200cms in these areas, which really adds to the feeling of overall space and comfort. The skylight is always welcomed, though there's ample ambient lighting also. There's a tall Dometic fridge/freezer and, unusually, the oven is found above this.

Drawers are used instead of cupboards throughout, and all can be electrically centrally locked during travel to ensure there is no flying cargo.



Then there's the familiar split en suite with two doors, one to separate the toilet and one the washroom. The shower comes with frosted doors that join together magnetically.

This model comes with a 2.3L engine and 180bhp, as well as automatic cab air-con, twin-lens reversing camera and a fully automatic nine-speed ZF gearbox.

And the Esprit I 7150-2 EB is as beautiful on the outside as it is on the inside, with curves in all the right places and 16-inch alloys. Exterior graphics can also be added to give your motorhome a personal feel.

Finished to the very highest standards, as you'd expect from any Dethleffs vehicle, the Esprit I 7150-2 EB is a motorhome with the potential to produce many years of travelling fun.

GRAND ALPA I 7820-2 - THE ULTIMATE ENTERTAINING APARTMENT ON WHEELS

The biggest compliment you can pay the Dethleffs Grand Alpa I 7820-2 is that it is very possible to forget you're in a motorhome.

This 8.54m beauty has more of an apartment feel than it does a conventional motorhome. In fact, were it an apartment in London you'd be the envy of your friends - and it'd probably be three-times the price.

The attraction of the Alpa is the huge rear lounge, which is rare for a German manufacturer. With a U-shaped layout right across the back of the vehicle, the I 7820-2 can comfortably sit six or even seven around the table, making it an entertainer's dream.



The area can be re-worked as a spacious double bed should four berths be required, but the main sleeping accommodation is found above the cab. This comfortable sleeping area drops down electronically and is accessed via a ladder, conveniently found in a pull-out cupboard. A deluxe memory foam mattress ensures a comfortable night.

There's loads of room in the kitchen area with extra worktop space, large drawers and a XXL fridge/freezer.



The whole motorhome benefits from panoramic windows meaning you even get an amazing view while slaving over a hot stove - as long as you're parked in the right place! Slightly unusually, the oven and grill are found above the fridge.

A new lighting system has been utilised which indirectly illuminates wall and floor elements. This is extremely effective in creating an atmospheric ambience, while panoramic skylights offer plenty of natural light.

The bathroom area delivers on its promise of "extreme comfort" with a large shower, sink and toilet, which can, of course, be separated off by doors for privacy.

There's Alde heating throughout and a deep double floor allows for ample storage on top of the generous garage area. The double floor, along with interior and exterior aluminium skin, means it can legitimately claim to be '100% winterproof,

ensuring year-round travel.

Built on Fiat AL-KO Tag axle chassis, the vehicle looks amazing from the outside and can be optioned with a 6.6m electric awning. The whole vehicle has that sought-after streamlined look from front to back.

With a massive Fiat 2.3 180bhp Euro 6 and nine-speed ZF automatic transmission, the vehicle is a joy to drive. Cruise control, cab carpet, cab blinds, leather steering wheel and gear stick along with automatic cab air conditioning deliver the ultimate comfort as you navigate this hefty 5,000kg motorhome from location to location.

This is a serious motorhome and, as you'd expect, has a pricetag to match. If you are looking to take your motorhoming to the next level, the Grand Alpa I 7820-2 offers sublime style and a well-thought layout perfect for socialising and enjoying life.



OFF ROAD? OFF GRID? ON POINT!

The world is literally your oyster when you hit the adventure trail in the HYMER ML-T 570 4x4 CrossOver.

However secluded the spot that you are seeking to visit, this new addition to the HYMER ranks passes any test with flying colours and is able to go off-road and off-grid without any issues.

With all the comfort, convenience and capability you could possibly require, this is the perfect vehicle for any holiday Odyssey.

The HYMER ML-T 570 4x4 CrossOver is built to such a high spec that it provides the ultimate in comfort, whatever the terrain it is tackling.

Built on the ever-reliable Mercedes-Benz Sprinter chassis, there is a huge package of high-level specification which come as standard with this edition model, including four-wheel drive with gear reduction,

all-terrain 16-inch black steel rim tyres and front LED light bars.

The 9cm suspension lift ensures better clearance when off-roading, reducing the risk of grounding the vehicle, while further enhancements include a spare wheel attached on the outer rear wall and roof rack with rear ladder. In terms of an off-road survival kit, you could ask for nothing more.

As well as all the driving comfort, the self-sufficient capabilities enjoyed by those lucky enough to travel with the HYMER ML-T 570 CrossOver is a huge asset.

A comprehensive equipment package, including a solar installation and HYMER Smart Battery System, ensures a self-sufficient lifestyle for up to 10 days, whatever the time of the year.

In addition, the economical 6kW diesel heater with an electric bar heater and altitude kit will ensure a cosy evening, however far you are off the beaten track after a long day of adventure.

Visually, this 6.89m vehicle also

provides the striking look you would associate with an off-road lifestyle including the neon green CrossOver decals with Black/Grey and Crystal Silver bicolour paintwork.

The stylish interior makes this a true template for luxury, with full Grigio leather interior and Chiavenna Walnut cabinetry available as an option.

Space is never at a premium, whether it be relaxing at the end of a long day in the L-shaped seating area or for storage in the spacious dark grey, overhead lockers.

Modern bathroom and kitchen set-ups - including a triple-burner stove, sink and 152 litre fridge/freezer - makes this feel like a home away from home and, when it comes to the end of a long day of adventure, the two twin beds at the rear - which can be transform into a large double - benefit from the comfortable disc-spring sleeping system to maximise comfort.

All in all, the HYMER ML-T 570 CrossOver represents perfection when it comes to enjoying the ultimate off-road adventure in maximum luxury and style.



HYMER BMC-I 600 WHITE LINE – A SPECIAL EDITION WHICH LIVES UP TO ITS NAME



If you like saving a few pounds – and, let's be fair, who doesn't? – then the HYMER BMC-I 600 White Line is well worth a look.

HYMER's ModernComfort range has won a string of awards for its innovation and style. This 600 White Line special edition takes that luxury a step further and comes fitted with a raft of Mercedes and HYMER options which tot up to an impressive £7,000 saving against the list price.

Included in the package is a whopping 170bhp engine – the largest on the market – and a nine-speed automatic gearbox, giving a high-torque drive to savour.

There's also an in-built awning, MBUX multimedia system, a reverse camera and Napoli full leather upholstery.

If that isn't enough to excite the bargain hunter within, how about



16" black alloy wheels, a 32 inch TV and an integrated sat nav?

Even without the added extras, there's plenty to admire about the 7.19m HYMER B-MC I 600. This is a motorhome built for travelling in comfort.

There's a classic L-shaped lounge with swivel captain's chairs so everyone can gather round the table. As mentioned, there's a sizeable telly in this vehicle, and they've come up with a clever way to store it as it swivels 90 degrees and locks into position. This innovative bracket also means it can be tilted in any which way so it can be enjoyed with a flawless picture from any seat.

A 142-litre Thetford fridge takes centre stage in the kitchen area, where you'll also find massive drawers underneath the sink. The cooker is separate from the grill and oven while there are plug sockets and USB ports galore.

The all-in-one washroom benefits from two huge mirrors and there's a well-sized separate shower.

The bedroom is found at the back of the vehicle and comprises two single beds, measuring 1.9m at the

longest point, which most people will find comfortable. There's the option to transform the sleeping area to 2.07m by 1.70m by inserting the infill. Usually, the bed would then be accessed by a small ladder, but here HYMER has upped the ante by including smart pull-out steps.

It's just one example of the superior build quality people have come to expect from HYMER. All drawers close effortlessly and softly while other doors in the vehicle, for example in the shower, click shut satisfyingly. A drawer under the seating area provides additional easy-to-reach storage space.

When greater sleeping options are required, another double bed can be easily dropped down from above the driving area.

The TEMPMATIK air conditioning system included in the edition model ensures a cosy atmosphere and pleasant temperatures at all times.

Sometimes special editions can be a little disappointing but here HYMER has succeeded in making a motorhome that is a bit, well, special. Certainly, one to consider at an attractive price point.

HYMER BMC-T 690 proving red hot favourite

Nimble and a joy to drive, the HYMER BMC-T 690 has proved to be one of the most popular in the Erwin Hymer Centre Travelworld range.

The BMC-T 690 is HYMER's semi-integrated version of its BMC-I 690. Combining the Mercedes Sprinter chassis cowl coupled with a HYMER SLC chassis, it's narrower at the front and that makes it more like a car to drive, making it a particularly good choice for those without decades of motorhome driving experience.

It weighs in at the magic 3.5 tonne, despite being 7.39m in length, a feat achieved through innovative lightweight bodywork and double flooring.

This attractive motorhome benefits from a rear island bed, with easy access either side. There are more than adequate wardrobes either side, as well as overhead storage.

One highlight of this model is that the height of the queen size bed can be adjusted as desired, offering even easier access if required, at the expense of some room in the garage.



A drop down bed can be added as a T-hood to the front of the vehicle as an extra, which gives the vehicle a unique appearance.

There's a stylish looking separate shower with a skylight and a separate toilet and basin. The door to the washroom can be used as a partition, ensuring extra privacy when the interior of the vehicle is divided into two sections. There's a quality look throughout and a neat cupboard under the basin.

The lounge is your classic L-shaped number with swivel driver and passenger seats so the whole travelling party can dine and relax together. The corner kitchen has been stylishly designed to create a homely atmosphere.

As you'd expect, a three-burner hob is present and there is a good, deep drawer underneath, as well as nice deep curved cupboards below the sink. The large 142 litre fridge with separate freezer compartment will be plenty for most.



The kitchen area benefits from two mains sockets and a USB socket, while the glossy overhead lockers ooze quality.

With clean curves and lines, the BMC-T 690 has a sporty appearance from the outside. Two garage doors on either side make the rear garage easy to load, with a load-bearing capacity of up to 350kg.

The BMC-T 690 has all the driving comforts you'd expect from a van or a car, with on-wheel controls and assistance systems, including hill start, automatic headlights and keyless activation. With a 143hp engine – upgradable to 170hp – and an optional 9G automatic transmission, it packs plenty of punch. Aluminium wheels and an improved multimedia system can also be added.

With so many boxes ticked, it's no surprise that the BMC-T 690 has already established itself as a firm favourite amongst motorhomers.



HYMER BML-I 890 LIVES UP TO ITS 'ULTIMATE' BILLING

It's massive, it's spacious and it's finished to hotel standard – the HYMER B-Class MasterLine BML-I 890 really is the ultimate king of the road.

Measuring a centimetre shy of nine metres, the MasterLine is bigger than HYMER's ModernComfort.

It's a six-wheel monster built on a tag-axle SLC chassis, which has been developed by HYMER in conjunction with AL-KO.

This is a head-turning vehicle from the outside. The front is slightly arrowed shape to integrate the wheelbase, giving it an almost sporty appearance despite its size, while the headlights meet at a point and extend around the vehicle. There's a stunning black grille with a chrome trim and LED fog lights, as well as a panoramic windscreen.

Expect an envious glare or two as you progress smoothly on the motorway with the optional 170hp engine.

The interior of the BML-I 890 can be summed up in a word: big. Everything has increased in size from the 780 and 790 layouts – and it's abundantly obvious the second you open the 65cm door.

There's an 80cm long side couch in the lounge, but it's the circular table that is the focal point. It already boasts a 79.5cm diameter but can be extended to 1.10m using a simple pop-up centre for when there are extra guests.



With reading lights and removable headrests as standard, it genuinely is easy to believe you are relaxing in a decent-sized lounge rather than onboard a motorhome. A 32inch LED which rises majestically from a hidden compartment behind the sofa can be added as an option.

The kitchen comes with premium mineral worktops as standard – and they're 15cm longer than the 790. Mid-height and floor-to-ceiling larder units provide plenty of storage space for all kitchen equipment.

There's a three-burner hob and a separate oven and grill, as well as a 153 litre fridge/freezer that can open from either side. A tall pantry unit slides out alongside the fridge.

The lounge and the kitchen are spacious, but it's the bathroom that really benefits from the overall length of this vehicle. This is where you really get your luxury. You'll probably know that motorhome showers tend to be practical, but not somewhere you will relish visiting. Not in the BML-I 890, where the shower is as large as you'd find in a home and there is a real glass door. There's also a full-width drying rail and a designer rectangle basin with

three good drawers underneath.

The toilet area is equipped with an open shelf, towel radiator and additional window. For extra privacy, the bathroom can also be partitioned off in the direction of the living area.

The bedroom is found at the back of the vehicle and features a queen size bed, fully two metres in length and almost 1.60 metres in width. This bed can be electrically lowered if required for even easier access, which does take away some space in the garage. There's stacks of room either side to access the wardrobes.

More sleeping space can be achieved with the usual drop-down bed in the cab – which can be electric as an option – and all lights in this motorhome can be dimmed to create a relaxing setting.

At 5.5 tonne, this is unlikely to be a motorhome to attract a first-timer, but it's actually a very comfortable drive, thanks largely to independent wheel suspension.

This is a motorhome that lives up to its 'ultimate' billing. If you need your home comforts on the road, then this truly is an apartment on wheels.

ENJOY UNLIMITED ADVENTURES WITH THE HYMER GRAND CANYON S

For big adventures with a touch of luxury, the HYMER Grand Canyon S is one of the kings of the camper van world.

The Grand Canyon S is the first HYMER on a Mercedes-Benz chassis. An all-wheel drive available as a 2.2L or a 3L, this 190bhp monster will make light work of even the most difficult terrains. Available as a 4x4 and a 4x4 CrossOver model, enabling hardened travellers to reach areas unobtainable by many camper vans. With a payload of approximately 700kg, there's plenty of potential to bring along all of the equipment you may need, whether it's bikes, canoes, hiking gear or barbecues.

But, crucially, this stylish camper van is also a great choice for short trips to well-equipped campsites, making it a versatile option for spontaneous couples raring to get away for the weekend at a moment's notice or families heading off grid.

The living area is modern and airy with swivel chairs and an extendable table so four people can dine comfortably.

You'll need to sleep horizontally in the Grand Canyon S. For this reason, HYMER has rather cleverly added extension pods to each side of the vehicle to give sleepers a few extra centimetres of space. It doesn't look like it from outside, but it does make a difference unless you are exceptionally tall.



High-quality disc-spring bed frames and cold foam mattresses promise a good night's sleep.

There is also the option of a pop-top tent in the roof to sleep an extra two people to make it a genuine four-berth. If you do not need that option, you will instead have a hatch in the roof for ventilation and light.

At 2.43m, the Grand Canyon S isn't the widest vehicle on the market but the two-burner hob is large enough to cook up a feast and underneath are good-sized drawers. The 90L fridge has ample space.

The bathroom sink folds out over the toilet and there is also a shower and some handy hanging rails for drying. It's certainly compact but also well equipped and practical. If the weather is nice the shower can also be fed through the window for a spot of al fresco washing.

The Grand Canyon excels in storage with compartments and overhead lockers all around, including plenty of space in the under-bed garage.

In the cab, there's plenty of space between driver and passenger and there are all of the systems you would find in a Mercedes Sprinter, including phone connections, touch controls on the steering wheel and assisted systems such as lane assist.

Make no mistake, the Grand Canyon S is a beast – and you'll feel king of the road when driving it. Steering is comfortable and the suspension is excellent, making lightwork of the many potholes you will inevitably encounter.

This is a camper van of impressive power – with all the quality you'd expect from HYMER. It's the number one choice for those who love going off the beaten track.

BLUE IS THE COLOUR WITH HYMER FREE EVOLUTION

When HYMER introduce what they call a special edition model, there is every reason to sit up and take notice – and the Free 540 Blue Evolution certainly doesn't disappoint.

This is very much a home from home and, for many people, it's the perfect starter camper van for those looking to enjoy adventures on the road for the first time.

The first eye-catching feature of the Blue Evolution is the sporty exterior design.

The bicolour exterior featuring the Metallic Storm Blue brings a truly modern feel, enhanced further by the 16" alloy wheels.

Inside the camper van, the Kitami upholstery complements the Grand Oak cabinetry perfectly to provide a clean and sleek predominately white and grey look.

From a driving perspective, there is also plenty to admire. Built on the heavily acclaimed Fiat Ducato chassis, the model is equipped with a 9 speed ZF automatic transmission gearbox while cruise control brings more than a semblance of calmness to even the most daunting and demanding of journeys.

One of the biggest aspects to admire about the Blue Evolution is the utilisation of space for what is, in the grand scheme of camper vans and motorhomes, a relatively small vehicle.



At 5.41m long, this is by no means the biggest camper van on the market. However, there is more than ample room for luggage and storage – aided by a handy utensil bag in the entrance area - without compromising on the level of comfort enjoyed on a relaxing evening.

What's more, the large double rear transverse bed doesn't provide the only sleeping potential in this motorhome. A pop-top, elevating roof makes it more than viable for four people to put their heads down for the evening, despite the compact layout.

In addition, the available living area can be easily expanded when you arrive at your latest destination with an anthracite-coloured awning which comes included in the package.

Unsurprisingly considering this is a HYMER model, the Free 540 Blue Evolution contains no shortage of state-of-the-art technological

feature to make your experience all the more enjoyable.

These include the Fiat multimedia system which has a seven-inch navigation device to plan all your routes and Apple CarPlay.

And, if there are young travellers in the party, an integrated SOFIX child seat mount gives that extra assurance.

With a sizeable kitchen – including a large fridge which can be opened from both sides and a two-burner hob with adjacent fridge area – and a spacious bathroom, the domestic needs of all travellers are more than catered for.

This truly is a home from home for many and the perfect camper van to take to the road in for those looking for a memorable holiday in a truly functional, modern and enjoyable environment.



INNOVATION AND CREATIVITY OOZES IN THE OUTSTANDING iSMOVE

Niesmann+Bischoff hasn't just re-written the rule book with the iSmove – they've set it on fire and started again with a completely different language.

The iSmove is the result of more than 23,000 hours of development – and it really does feel as though every second of that time has been well used to look at each aspect of the motorhome as we knew it and ponder how it could be better. There are seven patents pending on this vehicle, emphasising the creativity and innovation that has gone into it.

At first glance, however, you'd be forgiven for wondering whether this model was worthy of its lavish launch, accompanied by dramatic music and lights. Not that the exterior doesn't look amazing – it does – but it's, ultimately, a compact Arto in appearance. Niesmann+Bischoff probably has the most distinctive exterior in the business – and the iSmove doesn't stray too far from the well-loved blueprint.

As a result, it's a modern and sporty look with attractive contours, paired with two-sided aluminium sandwich walls for all-year travel.

At 7m and 7.3m and 3.5 tonne, the iSmove is quite a bit smaller than the 7.8m (for the Arto 77 E) and considerably more compact than the 8.76m Arto 88.

But it's when the door opens that the magic happens. In fact, the door



itself is worth a mention as here Niesmann+Bischoff has taken the unusual – and perhaps even brave – move of removing the window. The marketing literature asks: "Where did the idea come from that the only door in an integrated motorhome needs a window, and why?" A fair question, as without the window the door seamlessly integrates with the walls of the vehicle and creates a smart and modern feel.

The next immediately obvious change is the dark, anthracite headliner which runs the full length of the motorhome. Previously understood rules of design mean that this should make the vehicle appear smaller – and maybe even a little depressing – but here it has the effect of creating a homely and luxurious ambience.

Lounge cabinets have also been scrapped in favour of soundproofed felted walls, which create soothing acoustics.

There are clear sight lines down the one side of the vehicle, a feat achieved by ensuring everything that once took up room can now be moved when not in use, either electronically or by hand.

This 'only there when you need it' philosophy is particular apparent in the kitchen. With the premium kitchen package in play, surfaces and cabinets are only there



when required, disappearing into obscurity for the rest of the day. There's an electric kitchen shelf that vanishes at the push of a button, an extendable work surface which completely covers the gangway, a pull-out chopping board and a 138l compressor refrigerator in a drawer under the sink, including a 12l freezer compartment.

It almost goes without saying that the drawers have electric central locking and are soft close.

Face-to-face settees are all the rage so it's no surprise to see them here. What is new, however, is the genius way Niesmann+Bischoff has made them beautifully easy to convert into rear travel seats. A rotating bench seat swivels to transform into two travel seats with head restraints slotted in. It's a truly sumptuous solution that takes away all of the complex conversion headaches seen elsewhere. On the opposite side, a fifth travel seat can be optioned.

A 32 inch smart TV is fitted flush with the wall behind the travel seat.

A vehicle of this size would usually have to compromise on the shower – but not on the iSmove with Niesmann+Bischoff's patented solution. Here, the sliding door opens to reveal the corner washbasin and toilet, but there is no shower



to be seen. To access this, a bolt is undone and the whole wall moves, pushing the basin above the toilet to unveil a good-sized shower.

When it comes to sleeping, there are comfortable 2m long rear beds (single or island bed) in a bedroom that feels huge, along with plenty of storage and power sockets. The ultra slimline above-cab bed is also a joy to behold, creating extra headroom. Its innovative design means it folds away more neatly, too.

You'll be the envy of any campsite in the iSmove, but it's also more than capable of off-grid adventures thanks to a beefy 200l fresh water tank, a 50l fixed gas tank, a standard 100 Ah lithium cabin battery and optional 110W solar panel with an MPPT solar controller.

There's also a generous rear garage with space for all your



bikes, surf boards, skateboards and whatever else you need.

The large cab is appreciated and there's a real automotive feel about the driving experience. There's a 7 inch touchscreen with satnav and reversing camera, upgradable to 9 inch if you wish.

The Fiat 140bhp engine is standard which can be optioned to 160bhp or 180bhp, and the chassis can be upgraded to 3,700kg or 4,500kg.

It's refreshing to see a motorhome really push the boundaries and come up with new space-maximising solutions.

SIMPLY OUTSTANDING

ARTO 88 EK OOZES LUXURY AND CLASS



Just when we all thought the levels of opulence of motorhomes had peaked, along comes the Niesmann + Bischoff Arto 88 EK to rewrite the script.

This ‘compact liner’ exudes luxury and style and is one of the jewels in the crown of the Arto series, with stunning attention to detail.

Walk into this motorhome and one of the first things that hits home is just how spacious 8.76m can feel.

Despite numerous features to make this one of the most luxurious motorhomes on the road – including a 32” LED television, full Attraction black leather upholstery and no end of other high-level accessories - there is nowhere which leaves you feeling cramped.

Take the kitchen for example – a three-hob cooktop, impressive sized sink, oven, microwave, Thetford fridge/freezer, and ample storage provided by four large drawers provide everything needed to cook up a storm after a long day exploring.

Face to face settees and an adjustable table ensures the perfect space for relaxing after a long day out exploring and easy access through to the rest of the motorhome – where there is plenty more to see!

The washroom and bathroom facilities leave no stone unturned, including a hand basin/vanity and sizeable shower unit – all with the ability to create an en-suite feel with the closure of a couple of doors.

And, when you come to retire for the evening, the bedroom is very much a shining light for comfort.

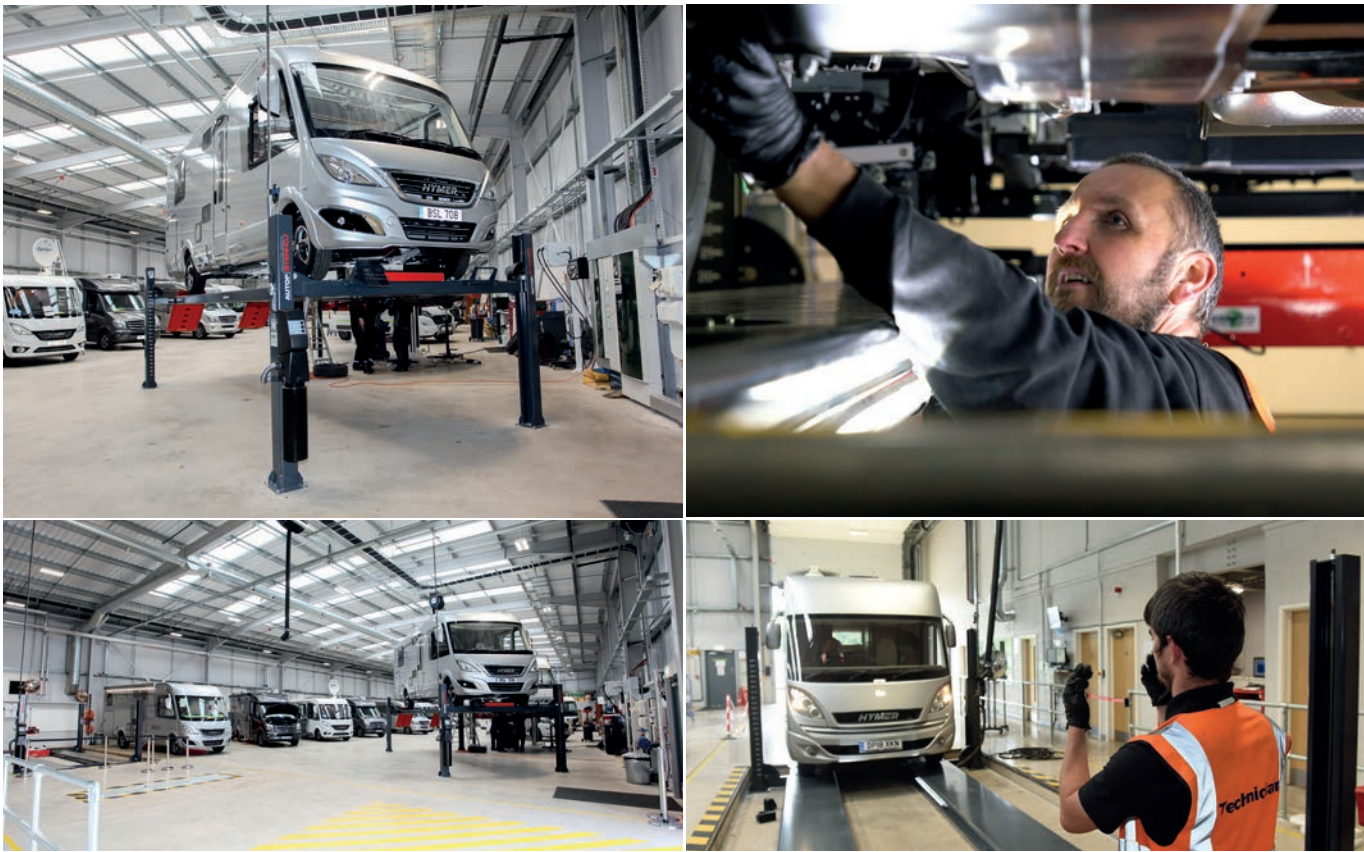
The two single rear beds plus drop down ensure a glorious night’s sleep, while the flat double-floor offers amazing insulation, along with endless storage opportunity. Externally, the Arto 88 EK exudes elegance and practicality, while

the AL-KO tag-axle low chassis ensures the vehicle is reliable, stable and easy to drive with a nine-speed automatic gearbox.

As if all of that isn’t enough, the Arto range has been enhanced in 2021 with the offer of Eifel Grey as the exterior colour, offering an excellent contrast to the standard white.

Throw in a 5.5m or 6m awning and the ability to be self-sufficient thanks in no short measure to the Lithium Energy Pack and there truly is nowhere better to pull up to your location of choice at the end of every spell-binding day.

In short, the Arto 88 EK is the perfect way to enjoy travelling adventures in the ultimate level of luxury and with so many of the classy touches that Niesmann + Bischoff has grown famous for.



MOT TEST STATION

We’re proud to have a brand new, fully-equipped MOT Testing Station on site, a service very few motorhome dealers can offer.

Erwin Hymer Centre Travelworld is now, more than ever, your first port of call for all motorhome servicing requirements.

Our workshop now includes an MOT certified four-post hydraulic ramp and a brake testing and axle weight measuring rolling road.

SERVICING

Our 20 bay workshop is open 12 hours a day, seven days a week.

Whatever your motorhome needs, our team of highly-experienced technicians are here to give your vehicle the care and attention it needs.

Whether it’s a simple oil and filter change, cambelt change on all makes and models, chassis lubrication service or brake service, we can offer it all.

We can also carry out full suspension upgrades from spring to air, gearbox repairs and all engine work, from a simple service to a full rebuild – and everything in between.

APPROVED WORKSHOP SCHEME

Travelworld are extremely proud to have achieved the ‘AWS’ Approved Workshop accreditation. It is simply the benchmark for Motorhome and Caravan servicing.





FIAT PROFESSIONAL



At Erwin Hymer Centre Travelworld, we're proud to hold the Fiat Professional franchise for servicing and warranties, making us the number one stop for work on any Fiat motorhome.

Our Fiat Professional trained technicians carry out all work to the manufacturer's specifications, using only genuine parts sourced through the MOPAR original parts supply chain.

OUR FIAT APPROVED SERVICES:

- We guarantee to offer you:
- Fiat Professional Trained Technicians
- Fiat Professional Diagnostic Equipment
- Fiat Professional Genuine Parts
- Fiat Professional Safety Recalls
- Fiat Professional Software Updates
- Fiat Professional Warranty Work
- Trust in us. Trust in Mopar
- Mopar is the parts, service and customer care organisation within Fiat Chrysler Automobiles.
- 2 Year Warranty on Genuine Parts
- Parts specifically designed for your vehicle
- Guaranteed work for 12 months
- Fitted by experts who know your vehicle

Mobile living made easy.

DOMETIC **OUTDOOR**

DOMETIC CFX3

THE ULTIMATE POWERED COOLERS

With the Dometic CFX3, you have control of your outdoor experiences like never before. The CFX3 gives you the power to change your state of mind and put your well-being first. On-road, off-road, outback or in the backyard, your ordinary and extraordinary adventures will be fueled by safer food, less waste and more confidence, giving you the power to be present in any moment. **dometic.com**



We optimize your motorhome. www.goldschmitt.de



Payload increases | Spring reinforcements | Comfort solutions | Levelling systems | Aluminum rims

Working with Travelworld

Home is where you level it.



Arrive



Press



Level



Relax



Automatic hydraulic self-levelling for motorhomes and caravans.

A level and stable vehicle in under two minutes.

Start your break the easy way... at the touch of a button.

The E&P Levelsystem for caravans and motorhomes takes the pain out of site arrivals. Leaving you to relax and enjoy your break.

Speak to a Travelworld representative for more information

www.ep-hydraulics.co.uk
info@ep-hydraulics.co.uk
01254 297 785



AL-KO QUALITY FOR LIFE

VB-FULLAIR

making everyday smoother



Working with Travelworld

Fully automatic air suspension systems for motorhomes & campervans.

IMPROVE YOUR DRIVABILITY, STABILITY AND COMFORT



To learn more contact us on:

01254 848 010

Or you can email us at:

sales@vbairsuspension.co.uk



**HY4 – THE MOST MODERN
HYDRAULIC SUPPORT SYSTEM**

- | Quick and easy leveling of your motorhome with a LED remote control
- | Precise, smooth and quiet leveling
- | Optimal weight distribution thanks to the four units mounted on the chassis
- | Maintenance free professional quality from the chassis specialist
- | No loss of storage space in the vehicle interior
- | Can be added to any Fiat chassis up to 5.5 tonnes

**NEW! Weighing function
and app control for
extra ease of use.**



Speak to a Travelworld representative today
to find out more. Or visit www.al-ko.com/hy4

Telephone: 01254 297 785

ERWIN HYMER CENTRE

Travelworld



Once you've found the perfect motorhome,
you're going to want all the very best
accessories and equipment to go with it.

At Erwin Hymer Centre Travelworld,
we've got you covered.

From solar panels to awnings, air conditioning
systems to alarms, you'll find what you're
looking for at www.motorhomes.shop

**We also have the widest range of
genuine Carado, Dethleffs, HYMER,
Niesmann+Bischoff and Fiat parts.**

**ACCESSORIES AVAILABLE AT
ERWIN HYMER CENTRE TRAVELWORLD**

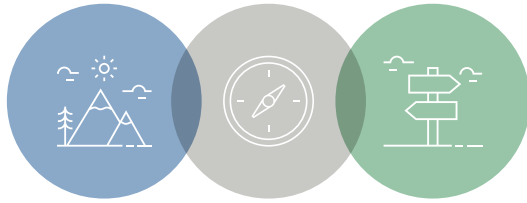
- | | |
|--------------------------|--------------------------|
| • Air Conditioning | • Inverters |
| • Air Suspension Systems | • Merchandise |
| • Alarm Systems | • Satellite Systems |
| • Awnings | • Self-Levelling Systems |
| • Batteries | • Services |
| • Bike Racks | • Solar Panels |
| • Clothing | • Trackers |
| • Coolers | • Wifi |
| • Gas | • Windscreens |

At Erwin Hymer Centre Travelworld we are also
the number one provider of Carado, Dethleffs,
HYMER, and Niesmann + Bischoff parts in the UK.

T&C's – please note that not all accessories and parts are available to order directly through the online shop, please enquire on these items.

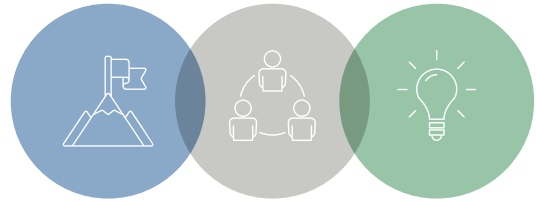


OUR PURPOSE



TO INSPIRE A LIFETIME
OF ADVENTURES

OUR VISION

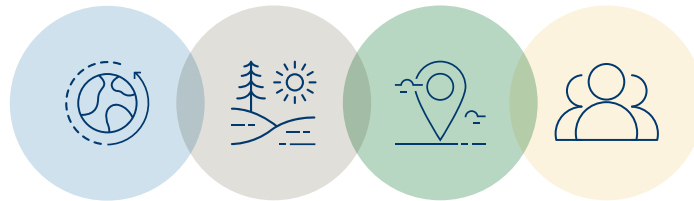


ACCELERATING THE QUALITY OF
EVERY CUSTOMER'S EXPERIENCE

OUR VALUES

WE NEVER SETTLE

We use our 40+ years of industry insight and experience to deliver our customers more quality, more value and more adventures.



WE'RE ALWAYS THERE

Whether answering questions or providing tailored support, we put our customers first by delivering a premium service driven by passion, sincerity and above all integrity.

WE EMBRACE TOMORROW

We continually look to the future to make sure that our product and service offering sets the industry standard, not only for today, but for tomorrow.

WE WORK AS ONE

We drive, challenge and push each other to ensure our customers receive exceptional care and attention at every turn.



**NIESMANN
+BISCHOFF**