

iSmove



PRICE LIST MODEL YEAR 2021/EN



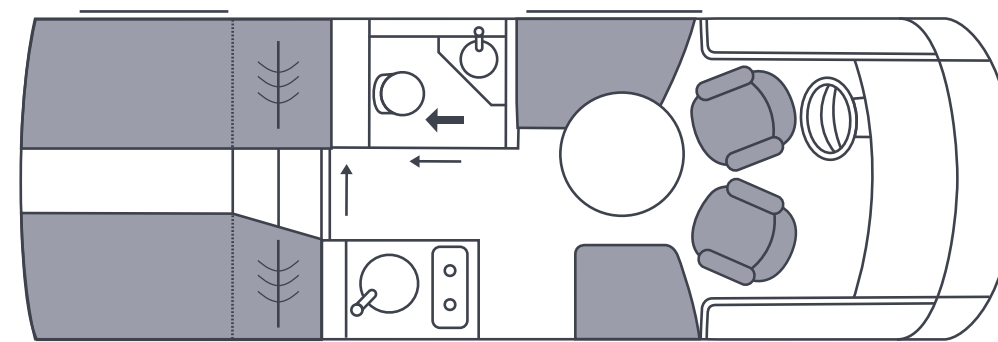
Clou inside



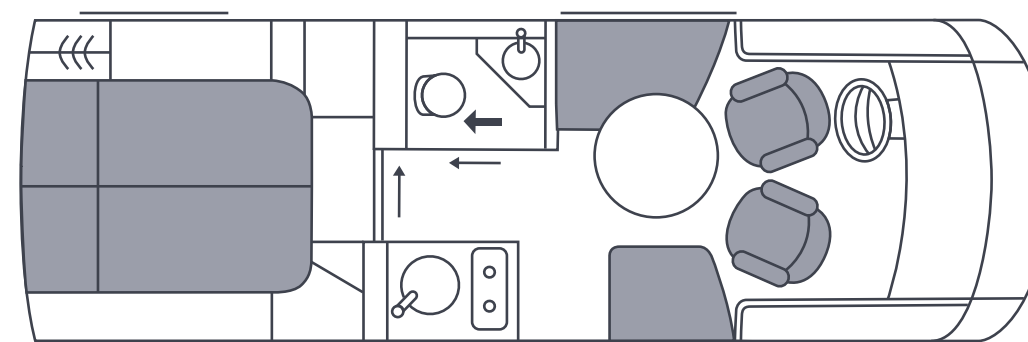
YOUR NEW iSMOVE: UNDER YOUR RULES.

STANDARD EQUIPMENT	4
TECHNICAL DATA	6
EQUIPMENT PACKS	10
OPTIONAL FEATURES	14
IMPORTANT INFORMATION	22

iSMOVE MODELS 2021



6.9 E



7.3 F

STANDARD EQUIPMENT

CHASSIS

- Fiat Ducato with 3,5 to. technically permissible laden mass
- Turbo diesel engine with electronically controlled Common Rail Direct Injection
- 2,3 l engine, power of 103 kW, 140 HP
- Emission class Euro 6 d temp with exhaust gas recirculation
- Manual 6-speed transmission
- Airbag for driver and passenger seat
- Electronically controlled anti-lock braking system (ABS)
- ESC
- Traction control, hill holder, traction + and hill descent control
- Tyres on front and rear axle with traction profile, M+S designation 225/ 75R16
- 16" Fiat alloy wheels
- Disc brakes on front and rear axle
- Electronic brake pad wear indicator
- Electronic brake force distribution (EBFD)
- Alternator 14 V / 150 A
- Battery 12 V / 95 Ah
- Fuel tank 75 l + 19 l AdBlue tank
- Independent suspension on front and rear axle
- AL-KO-lightweight low frame chassis with maximum frame lowering (144 mm)
- Hot-dip galvanised frame elements and wide chassis
- Bracing of the chassis by means of a 42 mm thick sandwich floor panel screwed and glued to the AL-KO low frame

DRIVER’S CAB

- Panoramic windscreen made of laminated safety glass, tinted, with sun shield
- Laterally suspended exterior rear-view mirrors
- Original Fiat Crashbox
- Engine bonnet with large opening angle and gas pressure opening mechanism
- Belt-integrated driver and passenger seat, rotatable by 180°
- Height-adjustable steering wheel
- 2 induction charging stations + 2 USB charging sockets for tablets and smartphones
- Practical storage space on driver's and passenger’s side
- Darkening pleats for driver and passenger side window
- Electrically adjustable isolation front plissé (variable sight protection for the windscreen)

BODYSHELL

- Exterior panels including garage door(s) made of torsion-resistant 2-sided-aluminium sandwich construction (30 mm) with styrofoam insulation (RTM)
- Roof panel in sandwich construction (30 mm), torsion-resistant with styrofoam insulation (RTM), inside aluminium, outside corrosion-free GRP High Strength X-treme including gel coat sealing
- Ceiling-to-wall connections without cold bridges, by means of highly compressed PU hard profiles
- Box structure completely without wood
- Lighting protection (“Faraday” cage)
- Entire roof safe to walk on
- Aluminium roof profiles with rain water channel for reducing side panel soiling
- Outer plate smooth, stove-enamelled white
- Connection of roof plate and front mask free of displacements prevents accumulation of rain water on the roof
- Side skirts of smooth aluminium profiles, stove-enamelled white
- Heated and insulated central double floor of 270 mm height
- Water and waste water tank frost-proof integrated in the insulated double floor
- Solid entrance door with double locking
- Exterior, electrically operated double entrance step, hidden behind a skirt
- Spacious rear garage with lighting, heatable and resistant floor cover
- Rear garage door, passenger side, with low loading height
- Garage walls covered with needle felt
- Tie system in the garage including 4 adjustable eyelets in each rail
- Insulated bodyshell windows, double-glazed plastic window in outer aluminium frame with PU insulation, with pleated darkening blind and insect protection
- LED daytime running- and back light
- Awning light above entrance door

LIVING AND SLEEPING

- Entrance door with boarding aid, coat hooks and integrated waste bin
- Continuously level floor from the driver’s cab through the lounge area
- Wear-resistant floor covering in wooden look
- High quality wear-resistant upholstery in 27 different combinations (leather with extra charge)
- Seat cushions with high comfort thanks to the 3-layer foam concept
- Round lounge table with sliding table top
- Storage space in seat bench on passenger’s side, with additional access hatch on the side
- Overhead cupboards with push-to-open system (gas pressure buffers) for maximum comfort in use
- Rear bed(s) with slatted frame and comfortable cold foam mattress
- Light management via touch screen made from genuine glass
- Power LED reading spots at the rear bed(s) and in the living room
- Bed access with night lighting
- Steps to the rear single beds with storage space
- Flexible reading lights at the rear bed
- Rear panelling “nature green”
- Skylight 40 × 40 cm
- Anthracite coloured microfiber on ceiling and on the skylight's frame

KITCHEN

- Embedded two-flame gas cooker with electric ignition
- Single-lever mixer tap
- Sliding cutting board
- Kitchen low cabinets with central locking
- Kitchen drawers with pull-in mechanism, available in different designs
- Refrigerator 106 l, with freezer, AES automatic
- Skylight 40 × 40 cm

BATHROOM AND TOILET

- Intelligent bathroom concept with swivelling wall
- Spacious shower with backlit shelves
- High-quality bathroom door
- Entire shower cab made of wear-resistant GRP
- Single-lever mixer tap for washbasin and shower
- Stand on wash-basin
- Shower grille
- Cassette toilet with trolley system
- Bathroom with towel rack and hooks
- Roof-light with insect screen and pleated darkening blind

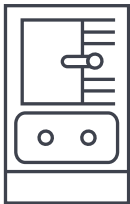
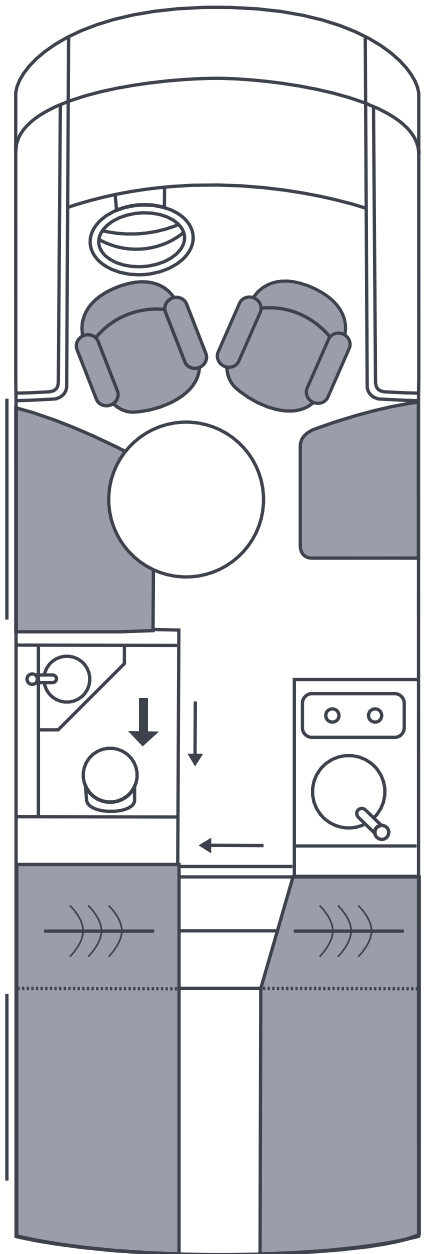
HEATING AND WATER

- Centralised, heatable water disposal compartment on driver side, discharge cocks for waste water / fresh water tank with large diameter (1 1/4") for comfortable discharge
- Fresh and waste water tank in the heatable double floor
- Openings for cleaning on top for fresh and waste water tanks, accessible from the lounge area
- Integrated warm-water heater for the supply of all consuming points
- Centralized boosted water supply over silent pump including filter system
- Screwable water connection for the pump and the filter
- Space for 2 × 11 kg gas bottles
- Truma air heating system (Combi 6)
- Mono control crash sensor for gas pressure regulator

ELECTRONICS

- Central electric system in the garage, easy to access
- 100 Ah battery
- 16 A charger with electronic control
- Battery control system with protection against overload and complete discharge
- Power-down of the electrics in case of undervoltage or overheat
- 230 V CEE connection on driver’s side, protected and accessible behind a hatch
- Automatic fault current circuit breaker
- Control panel with digital display
- 5 × 230 V and 2 × USB sockets in the rear bedroom, living room and driver’s cab
- Lights in LED technology, dimmable (roof spots and indirect lighting)
- LED lights in garage and water supply compartment

TECHNICAL DATA



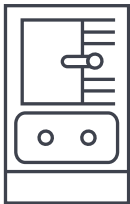
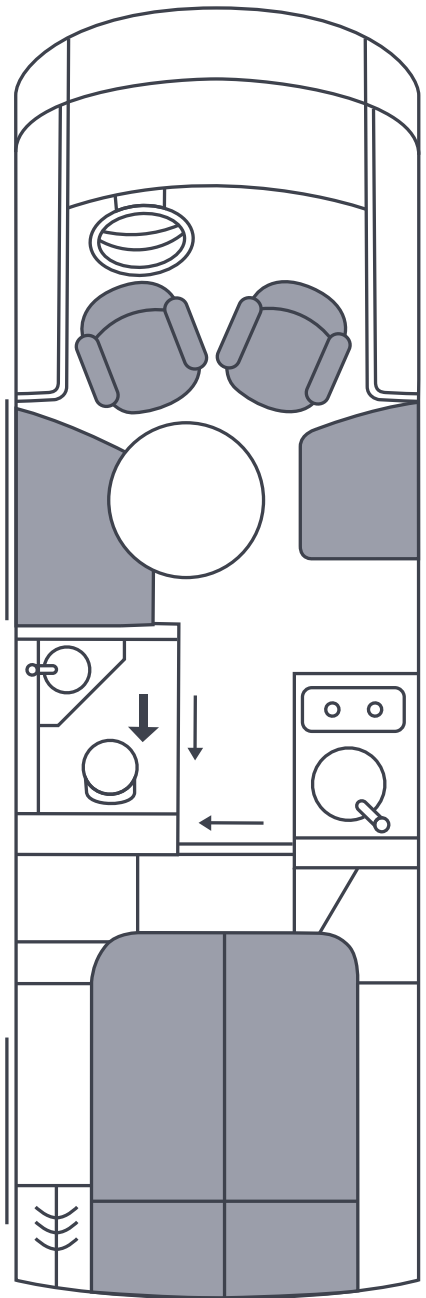
optional:
premium kitchen

iSmove 6.9 E

Base vehicle	Fiat Ducato
Chassis / Frame	AL-KO low frame AMC 35L (opt.: AMC45H)
Engine	Light Duty homologation (opt. Heavy Duty homologation)
Output in kW / HP	103 / 140 (opt.: 118 / 160)
Maximum torque in Nm	350 (opt.: 380 / 400)
Type	4-cylinder TD with VGT turbocharger
Engine displacement in cm³	2,287
Chassis / Tyres	
Wheel base in mm	4,100
Number of axles	2
Dimensions and weights (without accessories)	
Overall length in mm	6,995
Overall width in mm	2,278
Overall height in mm	2,835
Technically permissible laden mass in kg	3,500 (opt.: 3,700 / 4,500)
Mass in running order in kg approx. ^{1) / 4)}	2,840
Maximum payload in kg ²⁾	660 (opt.: 860 / 1,660)
Technically permissible towing weightbraked in kg ^{3) / 5) / 6)}	2,000
Seats	
Seats fitted with 3-point safety belt ⁴⁾	2 (3,4,5)
Couch behind driver (length × width) in mm	1,190 × 405
Couch behind passenger (length × width) in mm	910 × 605
Beds	
Overhead front bed (length × width) in mm	1,870 × 1,300
Rear bed (length × width) in mm	2,065 × 735 / 1,975 × 730
Filling quantities	
Fuel tank in l	75
AdBlue tank in l	19
Water tank content in l in driving / camping mode	20 / 200
Waste water tank in l	130
Gas supply in kg	2 × 11
Dimensions of the garage	
Maximum garage height in mm	1,134
Maximum available surface (length × width) in mm	2,010 × 1,080
Price in EUR, ex works, VAT not included	76,362

1), 2), 3), 4), 5), 6) on page 23

TECHNICAL DATA



optional:
premium kitchen

iSmove 7.3 F

Base vehicle	Fiat Ducato
Chassis / Frame	AL-KO low frame AMC 35L (opt.: AMC45H)
Engine	Light Duty homologation (opt. Heavy Duty homologation)
Output in kW / HP	103 / 140 (opt.: 118 / 160)
Maximum torque in Nm	350 (opt.: 350 / 400)
Type	4-cylinder TD with VGT turbocharger
Engine displacement in cm³	2,287
Chassis / Tyres	
Wheel base in mm	4,100
Number of axles	2
Dimensions and weights (without accessories)	
Overall length in mm	7,295
Overall width in mm	2,278
Overall height in mm	2,835
Technically permissible laden mass in kg	3,500 (opt.: 3,700 / 4,500)
Mass in running order in kg approx. ^{1) / 4)}	2,920
Maximum payload in kg ²⁾	580 (opt.: 780 / 1,580)
Technically permissible towing weightbraked in kg ^{3) / 5) / 6)}	2,000
Seats	
Seats fitted with 3-point safety belt ⁴⁾	2 (3,4,5)
Couch behind driver (length × width) in mm	1,190 × 405
Couch behind passenger (length × width) in mm	910 × 605
Beds	
Overhead front bed (length × width) in mm	1,870 × 1,300
Rear bed (length × width) in mm	2,000 × 1,380
Filling quantities	
Fuel tank in l	75
AdBlue tank in l	19
Water tank content in l in driving / camping mode	20 / 200
Waste water tank in l	130
Gas supply in kg	2 × 11
Dimensions of the garage	
Maximum garage height in mm	1,134
Maximum available surface (length × width) in mm	2,010 × 1,080
Price in EUR, ex works, VAT not included	77,202

1), 2), 3), 4), 5), 6) on page 23



EQUIPMENT PACKS

CP – Comfort Pack

Code	Description	Weight in kg	Price EUR*
86381	CP – Comfort Pack	15	
86343	Panorama skylight (Midi-Heki) for living room instead of standard skylight		580
86411	Aguti comfort seats for driver and passenger, orientable and adjustable in height, in textile (instead of the original Fiat seats)		857
86404	Acoustic walls		1,563
86405	Comfort mattress incl. Lattoflex system for rear bedroom		580
86399	Intuitive light concept, (motion and light sensors for floor lighting at night and bathroom, automatic lighting of the living room, garage and water compartment)		1,034
86409	Fly screen sliding door for body door		269
	Total individual prices		4,883
	Minus price advantage		-2,706
Package price			2,177

CHP – Chassis Pack

Code	Description	Weight in kg	Price EUR*
86383	CHP – Chassis Pack	22	
86299	Automatic air conditioning with pollen filter in driver's cabin		1,592
86298	Cruise control		244
86297	Comfort springs at the front axle		412
86391	Exterior mirrors, electrically adjustable and heatable, in the same colour as the model		580
	Total individual prices		2,828
	Minus price advantage		-735
Package price			2,093

*Price EUR, VAT not included.

EQUIPMENT PACKS

MMP – Multimedia Pack

Code	Description	Weight in kg	Price EUR*
86382	MMP – Multimedia Pack	44,5	
86280	“Basic” radio precabling, incl. 4 loudspeakers and FM/DAB+ antenna		579
86392	Navigation system with 7" touch screen incl. radio with DAB+, DVD slot, bluetooth (only in combination with radio precabling code 86280)		1,252
86276	Rear view camera behind exterior lily logo		496
86284	Smart LED TV 32" incl. triple tuner, Bluetooth 4.2, in living room		1,504
86250	SAT system Oyster Cytrac Vision (without receiver)		2,933
	Total individual prices		6,764
	Minus price advantage		-1,730
Package price			5,034

MP 1 – Multimedia Pack without SAT system

Code	Description	Weight in kg	Price EUR*
86410	MP 1 – Multimedia Pack without SAT system	21	
86280	“Basic” radio precabling, incl. 4 loudspeakers and FM/DAB+ antenna		579
86392	Navigation system with 7" touch screen incl. radio with DAB+, DVD slot, bluetooth (only in combination with radio precabling code 86280)		1,252
86276	Rear view camera behind exterior lily logo		496
86284	Smart LED TV 32" incl. triple tuner, Bluetooth 4.2, in living room		1,504
	Total individual prices		3,831
	Minus price advantage		-994
Package price			2,837

WP – Winter Pack

Code	Description	Weight in kg	Price EUR*
86384	WP – Winter Pack	49	
86247	Warm water heating with thermostat. control, heating cartridge and touch screen panel (independent heating circuit in the rear bedroom)		2,328
86269	Engine heat exchanger (uses the engine cooling water to heat the living area, only in combination with warm water heating code 86247)		832
86242	Double-glazed window for driver and passenger windows		832
	Total individual prices		3,992
	Minus price advantage		-891
Package price			3,101

PK – Premium Kitchen

Code	Description	Weight in kg	Price EUR*
86238	PK – Premium Kitchen	25	
86385	Compressor drawer fridge 138 l. , incl. 12 l. separate freezing compartment		1,235
86386	Restaurant-grade containers for compressor drawer fridge		101
86401	Surface of mineral material		899
86402	Extension for kitchen work top		193
86394	Electrical lift for kitchen incl. indirect lighting and 230 V socket		1059
	Total individual prices		3,487
	Minus price advantage		-1,832
Package price			1,655

*Price EUR, VAT not included.

OPTIONAL FEATURES

Chassis

Code	Description	Weight in kg	In package	Price EUR*
86319	2,3 l engine (160 HP), Ligth Duty homologation (3,5 t.)	15		1,782
86377	Fiat Ducato Maxi 4,5 t., Heavy Duty homologation (2,3 l, 160 HP)	40		3,521
86307	Weight upgrade to 3,7 t. (not available in combination mit Fiat Ducato Maxi, code 86377)	0		219
86322	Reduction of total weight to 3,5 t. (only available in combination with Fiat Ducato Maxi, code 86377)	0		219
86391	Exterior mirrors, electrically adjustable and heatable, in the same colour as the model	1	CHP	580
86414	Tyre sealant with compressor (Fix + Go)	8,5		117
86296	Automatic gear box ZF AT9	18		2,815
86243	Tow-bar (detachable) incl. rear traverse extension	64		1,387
86315	Rear steady legs (manual)	9		272
86299	Automatic air conditioning with pollen filter in driver's cabin	18	CHP	1,592
86297	Comfort springs at the front axle	2	CHP	412
86411	Aguti comfort seats for driver and passenger, orientable and adjustable in height, in textile (instead of the original Fiat seats)	0	CP	
86239	Aguti comfort seats for driver and passenger incl. seat heating and lombart supports	0,5		857
86376	90 l fuel tank	14		80
86325	LED headlights	5		1,084
86260	LED front fog light	1,5		251
86254	Steering wheel and shift knob in leather	0		206
86277	Steering wheel with radio control	0,5		164
86300	18" alloy wheels for Fiat Ducato Maxi AMC 45H, matt black (only available in combination with code 86377, Ducato Maxi)	17		2,261
86295	Automatic Start/Stop system (standard for 160 HP)	1,5		286
86298	Cruise control	1	CHP	245



86296 Automatic gear box



86300 18" alloy wheels

CP: Comfort Pack, CHP: Chassis Pack

*Price EUR, VAT not included.

Exterior

Code	Description	Weight in kg	In package	Price EUR*
86256	ClouLine Design (painted radiator grille with chrome elements, chrome elements around the front lights and on the back)	2		740
86338	Exterior chrome parts coated in black, matt (surcharge to Clou Line Design, code 86256)	0		580
86369	Exterior decoration Maxi "Carbon Optic" (decor foil on sidewall)	1,5		1,336
86371	Exterior decoration Maxi "Champagne matt" (decor foil on sidewall)	1		1,252
86367	Exterior decoration Maxi "Lava Orange" (decor foil on sidewall)	1		1,252
86372	Exterior decoration Maxi "Rhodium silver" (decor foil on sidewall)	1		1,252
86365	Accent decoration "Carbon Optic" (striping on front and rear panels, skirts and mirrors)	0,5		672
86366	Accent decoration "Champagne" (striping on front and rear panels, skirts and mirrors)	0,5		672
86363	Accent decoration "Lava Orange" (striping on front and rear panels, skirts and mirrors)	0,5		672
86374	Accent decoration "Carmine Red" (striping on front and rear panels, skirts and mirrors)	0,5		672
86407	Exterior paint in "Eifel grey" instead of white, white roof (only available in combination with Clou Line Design, code 86256)	2		5,034
86360	Door for driver's cabin (only available in combination with Clou Line Design, code 86256)	31		1,420
86263	Fresh-air fan above kitchen instead of standard skylight (not in combination with roof air conditioner code 86324)	1		290



86263 Fresh-air fan



86237 Exterior pull-out storage case



86407 Exterior paint in "Eifel grey"

OPTIONAL FEATURES

Exterior

Code	Description	Weight in kg	In package	Price EUR*
86242	Double-glazed window for driver and passenger windows	14	WP	832
86290	Panorama skylight (Midi Heki) over rear bedroom instead of standard skylight	8		580
86343	Panorama skylight (Midi-Heki) for living room instead of standard skylight	8	CP	580
86244	Garage door on driver's side (left, same size as passenger side)	7		790
86237	Exterior pull-out storage case on passenger's side (right side)	10		503
86375	Exterior pull-out storage case on driver's side (not in combination with gas tank, code 86259)	11		503
86264	Heated windscreen	1		584
86288	Awning 5 m (manual) incl. LED lights	61		1,462
86408	Awning 4,25 m (manual) incl. LED lights	41,5		1,256

Interior

Code	Description	Weight in kg	In package	Price EUR*
86404	Acoustic walls	3	CP	1,563
86232	Fire extinguisher	3		100
86409	Fly screen sliding door for body door	4	CP	269
86386	Restaurant-grade containers for compressor drawer fridge	0,5	PK	101
86335	Doors for ceiling cupboards in "walnut planked" (dark walnut)	0		0
86230	Doors for ceiling cupboards in "breeze oak" (light oak)	0		0
86329	Doors for ceiling cupboards in "white planked" (white mat)	0		0
86328	Rear wall panelling in bedroom in carbon look	0		815
86379	Rear wall panelling in bedroom in petrol colour	0		408
86413	Rear wall panelling in bedroom in olive green	0		408
86261	Front folding bed (manual) with slatted frame and comfort mattress	30		748
86399	Intuitive light concept (motion and light sensors for floor lighting at night and bathroom, automatic lighting of the living room, garage and water compartment)	0	CP	1,034
86393	230 V capsule coffee machine	2		125
86405	Comfort mattress incl. Lattoflex system for rear bedroom	0	CP	580
86385	Compressor drawer fridge 138 l., inclusive separate freezing compartment 12 l.	13	PK	1,235
86402	Extension for kitchen work top	2,5	PK	193
86336	Kitchen drawers in "walnut planked" (dark walnut), incl. drawers under the rear bed in the model 7.3 F	0		0
86229	Kitchen drawers in "breeze oak" (light oak), incl. drawers under the rear bed in the model 7.3 F	0		0

CP: Comfort Pack, WP: Winter Pack, PK: Premium Kitchen

Interior

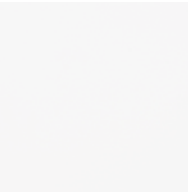
Code	Description	Weight in kg	In package	Price EUR*
86330	Kitchen drawers in "white planked" (white mat), incl. drawers under the rear bed in the model 7.3 F	1		0
86401	Surface of mineral material in the kitchen	4	PK	899
86394	Electrical lift for kitchen incl. indirect lighting and 230 V socket	5	PK	1,076
86323	Seat bench on driver's side (left) turnable into a L-shape lounge with 2 additional seatbelts, incl. folding & sliding table (rail system on the floor)	45		1,260
86292	Additional seatbelt in seat bench on passenger's side (right), registration for 3 persons or for 5 persons with code 86323, L-shape lounge	37		753
85257	Additional mattress between single beds	7		164
86412	Floor carpet in the driver's cab	4		124



86335 Walnut planked



86230 Breeze oak



86329 White planked



86261 Front folding bed

Heating, Air conditioning

Code	Description	Weight in kg	In package	Price EUR*
86240	Truma air heating with Combi 6 E heating elements (1,800 W)	0		566
86247	Warm water heating with thermostat. control, heating cartridge and touch screen panel (independent heating circuit in the rear bedroom)	29	WP	2,328
86269	Engine heat exchanger (uses the engine cooling water to heat the living area, only in combination with warm water heating code 86247)	6	WP	832
86270	Extended heating for warm water heating in the driver's cab (original Fiat ventilation connected with warm water heating, only in combination with warm water heating code 86247 and engine heat exchanger code 86269, operable over separate touch screen panel)	8,5		1,213
86268	Floor heating (only available in combination with code 86247, warm water heating)	5		496
86324	Roof air conditioner instead of standard skylight (2,400 W cooling capacity, 1,700 W heating power, not available in combination with fresh-air fan, code 86263)	36		1,848
86274	Inet Box to control the heating and/or roof air conditioning (SIM card needed, not included)	1		492

*Price EUR, VAT not included.

OPTIONAL FEATURES

Gas, Water, Sanitary

Code	Description	Weight in kg	In package	Price EUR*
86327	Exterior shower in garage	1		248
86262	Box storage system in the garage instead of gas compartment (only available in combination with code 86259, gas tank)	-1		0
86395	Electrical discharge for waste water tank	0		134
86390	Camera in waste water tank, with display via double DIN monitor on the dashboard (only available in combination with navigation system, code 86275 or 86392)	1		332
86246	120 l fixed toilet tank with electrical function and ceramic toilet bowl	37		1,004
86245	Gas supply connection in side wall	1		164
86266	Gas filter (two units) for camping gas bottles (only in combination with Truma DuoControl, code 86265)	1		171
86259	50 l / 20 kg gas tank incl. display	37		1,512
86271	Ceramic bowl for cassette toilet	10		164
86267	Narcotic gas alarm	3		387
86241	SOG toilet ventilation	0		248
86265	Truma DuoControl CS gas flow control	2		240
86389	Hose waste water disposal in storing tube	0		151



86262 Box storage system in the garage



86246 Fixed toilet tank



86259 50 l / 20 kg gas tank



86286 Lithium batteries



86284 Smart LED TV 32"



86281 Sonos sound bar

On-board technology

Code	Description	Weight in kg	In package	Price EUR*
86236	Alarm system (body, garage door, control of the interior rooms can be switched off)	1		995
86248	70 A combi charger with 1,600 W inverter, 12 to 230 V (only in combination with second battery, code 86285)	12		2,345
86285	Additional 100 AH lithium battery (total 2)	17		1,420
86286	2 × 100 AH lithium batteries (total 3)	33		2,841
86273	Backup warning	0		319
86287	2 × 125 W solar system	20		1,840
86249	230 V socket in the garage	0,5		193
86235	Central locking for body and garage door(s)	1		662

Radio, TV, Satellite, Navigation

Code	Description	Weight in kg	In package	Price EUR*
86282	LTE and WiFi Router for own network with large operating range (SIM card needed, not included)	1		1,084
86275	Navigation system with 9" touch screen incl. radio with DAB+, blue-tooth (only in combination with radio precabbling code 86280)	3		1,832
86392	Navigation system with 7" touch screen incl. radio with DAB+, DVD slot, bluetooth (only in combination with radio precabbling code 86280)	3	MMP + MP1	1,252
86280	"Basic" radio precabbling, incl. 4 loudspeakers and FM/DAB+ antenna	6	MMP + MP1	579
86276	Rear view camera behind exterior lily logo (display not included)	1	MMP + MP1	496
86250	SAT system Oyster Cytrac (without receiver)	23,5	MMP	2,933
86251	SAT system Oyster Cytrac Twin (without receiver)	24		3,353
86284	Smart LED TV 32" incl. triple tuner, Bluetooth 4.2, in living room	11	MMP + MP1	1,504
86279	Smart LED TV 22" in bedroom (only available in combination with code 86251, twin system)	5		748
86281	Sonos sound bar incl. 250 W charger (only available in combination with LTE Router, code 86282)	4,5		622

MMP: Multimedia Pack, **MP1:** Multimedia Pack without SAT system

*Price EUR, VAT not included.

OPTIONAL FEATURES

Upholstery

Code	Description	Weight in kg	In package	Price EUR*
Seat cushions including driver and passenger's seats				
86252	Shadow (textile, anthracite)	0		0
86345	Grey (textile, grey)	0		0
86344	Green (textile, green)	0		0
86346	Temptation (leather, beige)	2		2,008
86347	Attraction (leather, anthracite)	2		2,008
86348	Sensation (leather, brown)	2		2,008
Backrest cushions, style "Kiss"				
86253	Grand Cru no. 1	0		0
86349	Grand Cru no. 3	0		0
86350	Grand Cru no. 4	0		0
86351	Grand Cru no. 6	0		0
86352	Grand Cru no. 7	0		0
86353	Grand Cru no. 10	0		0
86354	Grand Cru no. 14	0		0
86355	Grand Cru no. 15	0		0
86356	Grand Cru no. 16	0		0
86357	Beige leather	2		832
86358	Anthracite leather	2		832
86359	Brown leather	2		832

Seat cushions including driver and passenger's seats



Shadow
(textile, anthracite)



Grey
(textile, grey)



Green
(textile, green)



Temptation
(leather, beige)



Attraction
(leather, anthracite)



Sensation
(leather, brown)

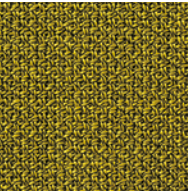
Backrest cushions



Grand Cru no. 1



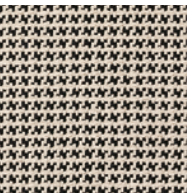
Grand Cru no. 3



Grand Cru no. 4



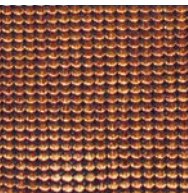
Grand Cru no. 6



Grand Cru no. 7



Grand Cru no. 10



Grand Cru no. 14



Grand Cru no. 15



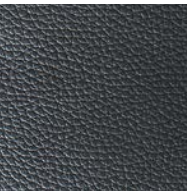
Grand Cru no. 16



Beige leather



Brown leather



Anthracite leather

*Price EUR, VAT not included.

IMPORTANT INFORMATION



¹⁾ The “mass in running order” according to EU directive accepted in VO (EU) no. 1230 / 2012 includes: the empty mass with standard equipment, driver (75 kg), filling quantities for fuel (90 %), fresh water in driving mode (20 l) and a 100 % filled gas bottle and connecting cables. Differences as part of the manufacturer tolerance are possible and allowed.

²⁾ The payload is the difference between the technically permissible laden mass and the total effective vehicle mass. Weights of the optional equipment have to be added to the “Mass in running order”.

³⁾ The permissible total towing weight must not exceed 5,500 kg for AMC 35 L chassis and 6,000 kg for maxi chassis.

⁴⁾ Further persons are allowed to ride along as far as the technically permissible laden mass is not exceeded and respective seats with safety belts are present.

⁵⁾ The indication regarding the technically permissible towing weight braked represents a maximum value, which depends on the real vehicle mass incl. persons and loading. The technically permissible maximum towable mass shall not be in any case exceeded.

⁶⁾ All information concerning the total towing weight is valid for a maximum incline of 12 % at an uphill start. Weight upgrade (Fiat Ducato Maxi AMC 45H) does not raise the total towing weight.

Due to the different materials, manufacturing procedures and light conditions, colour deviations can occur on bodywork and attachment parts. Colour deviations do not authorise complaints or warranty claims.

All the dimensions and weights are rounded figures and can vary according to the different homologation directives.

Important information

This brochure is subject to change without notice. After the copy deadline of this price list (09/2020) changes as to models and products, floor plans, technical data, equipments, etc. may have occurred. The illustrations also contain optional features, and/or accessories which are not included in the standard equipment and decoration respectively which is not included in Niesmann+Bischoff range of supply. Descriptions may have been garbled due to graphic conversion, photographic processing or technical reasons. All data on range of supply, appearance, performance, weights and measures, as well as fuel consumption of the vehicles are in compliance with the knowledge existing at the time of the copy deadline and are valid for all purchase and licensing in the Federal Republic of Germany. Deviations of the values within a range of $\pm 10\%$ are possible. The measures of the mattress may slightly vary from the given bed measures. E. g. data on the capacity of the refrigerators refer to producer information. Prices for optional features are only valid when installed during production. In case of subsequent installation additional installation and servicing expenditures are accrued at cost. We reserve the right to change prices, construction and equipment without notice. With the issue of this brochure all previously issued information and price lists become void.

Publisher

Niesmann+Bischoff GmbH
Clou-Straße 1, 56751 Polch
T +49 2654 933-0
F +49 2654 933-100
M info@niesmann-bischoff.com
W niesmann-bischoff.com

Concept + Design

BUTTER. GmbH, Düsseldorf

Photography

mooi Studio, Mendig
BUTTER. GmbH, Düsseldorf

Tech. Presentation + Renderings

Studio SYN, Rüsselsheim

Last updated: 01.09.2020

Design diversity

Personality comes from within. The same applies to your iSmove. How would you like yours to look? Would you prefer classic-chic or something a bit bolder? No matter what decision you make, you will always feel right at home, as the fabrics and materials are all of high quality.

Build your very own iSmove now at:

<https://configurator.niesmann-bischoff.com>