



Clou inside

NIESMANN  
+BISCHOFF

# Smove

The sporty  
all-rounder



EN

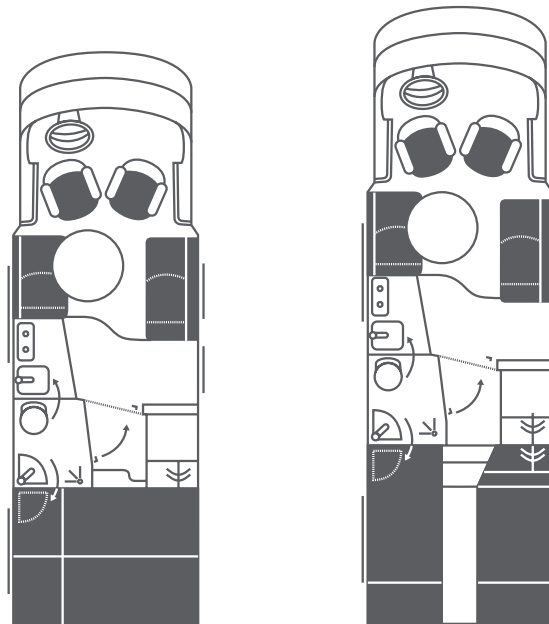
Price list Model year 2021

# Content

- 03** Standard Equipment Smove
- 06** Technical Data
- 08** Equipment Packs
- 10** Optional Features
- 18** Important Information



# Smove Models 2021



6.9 Q

7.4 E

## Standard Equipment Smove

### Chassis

- Fiat Ducato 35L
- Airbag for driver and passenger seat
- Turbo diesel engine with electronically controlled Common Rail Direct Injection
- Emission class **Euro 6 d temp** with exhaust gas recirculation
- Manual 6-speed transmission
- Electronically controlled anti-lock braking system (ABS)
- ESC
- Traction control, hill holder, traction+ and hill descent control
- Disc brakes on front and rear axle
- Electronic brake pad wear indicator
- Electronic brake force distribution (EBFD)
- Alternator 14 V / 150 A
- Battery 12 V / 95 Ah
- Tyre sealant with compressor (Fix + Go)
- Tyres with traction profile (mud and snow identification) and 225 / 75 R 16 steel wheels
- Independent suspension on front and rear axle
- AL-KO-lightweight low frame chassis with maximum frame lowering (144 mm)
- Hot-dip galvanised frame elements and wide chassis
- Bracing of the chassis by means of a 42 mm thick sandwich floor panel screwed and glued to the AL-KO low frame
- Reinforced 3-shell B-pillar for a higher torsional stiffness between the driver's cabin and the bodyshell
- Fuel tank 90l + 19l Ad Blue tank

## Driver's Cab

- Panorama front hood out of resistant glass fibre, double shelled and insulated
- Tinted, large fixed skylight with darkening plissé
- Driver and passenger seat, rotatable by 180° and height adjustable
- Cab's doors with electrical side windows
- Height-adjustable steering wheel
- LED lighting in the driver's cab
- Dashboard with cup holder and chrome rings

## Bodyshell

- Exterior panels including garage hatch made of torsion-resistant 2-sided-aluminium sandwich construction (30 mm) with styrofoam insulation
- Roof in sandwich construction (30 mm), torsion-resistant with styrofoam insulation, inside aluminium, outside corrosion-free GRP High Strength X-treme including gel coat sealing
- Ceiling-to-wall connections without cold bridges, by means of highly compressed PU hard profiles
- Box structure without wood
- Lighting protection because of Faraday cage
- Roof side sillboard in automotive design and roof rain water channel to reduce side panel soiling
- Aerodynamic roof shape and B-pillar covering for lower drag and driving noise
- Outer plate smooth, stove-enamelled white
- Panorama front hood, rear bumper, wheel case cover and side skirts as well as rear panel of highly stable and corrosion-free glass fibre composite material
- Heated and insulated double floor of ca. 270 mm height
- Water and waste water tank frost-proof integrated in the insulated double floor
- Solid entrance door with electric closing aid, double locking and window
- Exterior, electrically operated entrance step, with automatic closing system, while starting to drive
- Spacious rear garage with lighting, heatable
- Rear garage door, passenger side (right), with low loading height
- Rear garage floor coated with highly wear-resistant dimpled membrane
- Insulated bodyshell windows, double-glazed plastic window in outer aluminium frame with PU insulation, with pleated darkening blind and insect protection
- Garage walls covered with needle felt
- Tie system in the garage including 4 adjustable eyelets in each rail

## Living and Sleeping

- Textile covering on the interior of the side panels and roof
- Padded decorative elements on the inside of the roof and of the B-pillars
- Wear-resistant floor covering in stone tiles look
- High quality wear-resistant upholstery in 27 different combinations (plus leather for an additional charge)
- Seat cushions with high comfort thanks to a 3-layer foam concept
- [Lounge table with multi-directional displacement mechanism](#)
- Practical drawer in the entrance area with electrical locking
- Solid handle covered with leather for easy entry
- Continuous overhead cupboards in living room and rear bedroom with push-to-open system (gas pressure buffers) for a maximum comfort in use
- Indirect ambiance lighting with LED-technology for lounge area (dimnable) and rear bed
- Rear bed with lath frame and comfortable cold foam mattress
- Window on drivers side in bedroom, additional window on passenger side in [model 7.4 E](#)
- Power LED reading spots in the rear bedroom as well as in the living room
- Bed access with night lighting
- Step to access the rear single beds with storage space
- Flexible reading lights at the rear bedroom
- Automatic floor lighting in the living room podium when opening the body door

## Kitchen

- Innovative kitchen concept turning a sideboard into a loft kitchen
- Kitchen working surface out of safety glass
- High quality two-flame stainless steel gas cooker with electric ignition, built-in in the working surface
- Single-lever mixer tap
- Electrical central locking of the lower kitchen cabinets
- Kitchen drawers with pull-in mechanism
- Refrigerator 140 l, with built-in freezer and large cool compartment for 1,5 l bottles, AES automatic
- Waste bin in the lower kitchen cabinet

## Bathroom and Toilet

- Intelligent bathroom concept with swivelling washbasin and sliding toilet with electrical mechanism
- High-quality bathroom door with stainless steel door handle set
- Entire bath cab made of wear-resistant GRP
- Foldable Single-lever mixer tap
- Spacious shower tray with seating stool
- Cassette toilet with trolley system
- Bathroom with towel rack and hook
- Roof-light with insect screen and pleated darkening blind

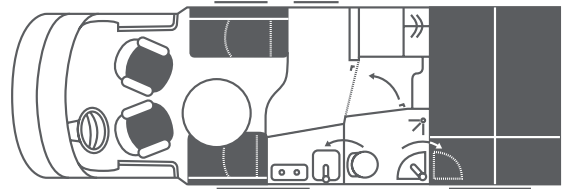
## Heating and Water

- Centralised, heatable water disposal compartment on driver side, discharge cocks for waste water / fresh water tank with large diameter (1 1/4") for comfortable discharge
- Fresh and waste water tank in the heatable double floor, frost-proof
- Screwable water connection for the pump and the filter
- Air heating from Truma (Combi 6)
- Openings for cleaning on top for fresh and waste water tanks, accessible from the lounge area
- Integrated warm-water heater for the supply of all consuming points
- Centralized boosted water supply over silent pump including filter system
- Space for 2 × 11 kg gas bottles
- Mono control crash sensor for gas pressure regulator

## Electronics

- Central electronic system in the garage, easy to access
- AGM battery 95 Ah
- Charging set 16 A with electronic control
- Battery control system with protection against overload and complete discharge
- Power-down of the electrics in case of undervoltage or overheat
- 230 V CEE connection on driver's side, protected and accessible behind a hatch
- Automatic fault current circuit breaker
- Centralised control panel with digital display
- 4 × 230 V sockets and 2 × USB sockets in the living room (depends on model)
- Lights (roof spots, spots under ceiling cupboards and reading spots) in LED-Technology
- Indirect ambiance lighting (dimable) in living area
- LED-lights in garage and water supply compartment

# Technical Data

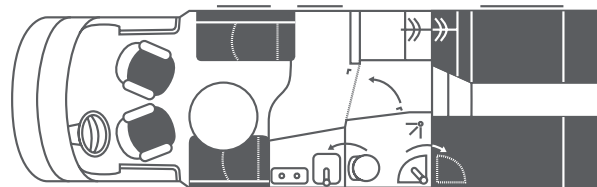


## Smove 6.9 Q

Base vehicle	Fiat Ducato, Euro 6d-Temp	
Chassis / Frame	AL-KO low frame AMC 35L (opt.: AMC45H)	
Engine	Light Duty Homologation*7	Heavy Duty Homologation
Output in kW / HP	103/140 (opt.: 118/160, 132/180)	96/130 (opt.: 118/160)
Maximum torque in Nm	350 (opt.: 400 / 450)	350 (opt.: 380)
Type	4-cylinder TD with VGT turbocharger	
Engine displacement in cm³	2,287	
Chassis / Tyres		
Wheel base in mm	4,100	
Number of axles	2	
Dimensions and weights (without accessories)		
Overall length in mm	6,930	
Overall width in mm	2,245	
Overall height in mm	2,770	
Technically permissible laden mass in kg	3,500 (opt.: 3,650 / 4,500)	
Mass in running order in kg approx.1) / 4)	2,930	
Maximum payload in kg2)	570 (opt.: 720 / 1,570)	
Technically permissible towing weightbraked in kg3) / 5) / 6)	1,850 – 2,000	
Seats		
Seats fitted with 3-point safety belt4)	2 (3,4)	
Couch behind driver (length × width) in mm	895 × 557	
Couch behind passenger (length × width) in mm	1,215 × 577	
Beds		
Rear bed(s) (length × width) in mm	2,000 × 1,500	
Filling quantities		
Fuel tank in l	90	
AdBlue tank in l	19	
Water tank content in l in driving / camping mode	20 / 140 (opt.: 200)	
Waste water tank in l	130	
Gas supply in kg	2 × 11	
Dimensions of the garage		
Maximum garage height in mm	1,140	
Maximum available surface (length × width) in mm	2,060 × 1,000 / 1,070	

Price in EUR, ex works, VAT not included

71,000



## Smove 7.4 E

Base vehicle		Fiat Ducato, Euro 6d-Temp
Chassis / Frame		AL-KO low frame AMC 35L (opt.: AMC45H)
Engine	Light Duty Homologation*7	Heavy Duty Homologation
Output in kW / HP	103/140 (opt.: 118/160, 132/180)	96/130 (opt.: 118/160)
Maximum torque in Nm	350 (opt.: 400 / 450)	350 (opt.: 380)
Type	4-cylinder TD with VGT turbocharger	
Engine displacement in cm³	2,287	
Chassis / Tyres		
Wheel base in mm	4,250	
Number of axles	2	
Dimensions and weights (without accessories)		
Overall length in mm	7,430	
Overall width in mm	2,245	
Overall height in mm	2,770	
Technically permissible laden mass in kg	3,500 (opt.: 3,650 / 4,500)	
Mass in running order in kg approx.1)/4)	3,020	
Maximum payload in kg2)	480 (opt.: 630 / 1,480)	
Technically permissible towing weightbraked in kg3)/5)/6)	1,850 – 2,000	
Seats		
Seats fitted with 3-point safety belt4)	2 (3, 4)	
Couch behind driver (length × width) in mm	895 × 557	
Couch behind passenger (length × width) in mm	1,215 × 577	
Beds		
Rear bed(s) (length × width) in mm	2,000 × 765 / 765	
Filling quantities		
Fuel tank in l	90	
AdBlue tank in l	19	
Water tank content in l in driving / camping mode	20 / 140 (opt.: 200)	
Waste water tank in l	130	
Gas supply in kg	2 × 11	
Dimensions of the garage		
Maximum garage height in mm	1,140	
Maximum available surface (length × width) in mm	2,060 × 1,000 / 1,070	

**Price in EUR, ex works, VAT not included**

**74,353**

1), 2), 3), 4), 5), 6), 7) on page 18

# Equipment Packs

## CP Comfort Pack for all models

Code	Description	Weight	Price EUR
		in kg	VAT excl.
<b>86180</b>	<b>CP – Comfort Pack (special price)</b>	12	
86179	Aguti comfort seats for driver and passenger, orientable and adjustable in height, in textile (instead of the original Fiat seats)		857
86029	Darkening pleats for front and side windows in the driver's cab		748
86089	Comfort mattress incl. Froli bed system		580
86177	Body windows with one-hand operation		412
86178	Fly screen net for body door		269
	Total individual prices		2,866
	Minus price advantage		-1,193
<b>PACKAGE PRICE</b>			<b>1,673</b>

## CHP Chassis Pack for all models

Code	Description	Weight	Price EUR
		in kg	VAT excl.
<b>86181</b>	<b>CHP – Chassis Pack (special price)</b>	25.5	
86135	Automatic air conditioning with pollen filter in driver's cabin		1,592
86136	Cruise control		244
86176	Fog lights		176
86171	LED daytime running lights instead of standard lights		269
86003	Exterior mirrors electrically adjustable and DAB + antenna		395
86139	Dashboard decor with aluminium inlays		138
86187	Loose carpet in the driver's cab		91
	Total individual prices		2,905
	Minus price advantage		-981
<b>PACKAGE PRICE</b>			<b>1,924</b>

## LEP Lithium Energy Pack for all models

Code	Description	Weight	Price EUR
		in kg	VAT excl.
<b>80032</b>	<b>LEP – Lithium Energy Pack</b>	31	
86220	2x100AH Lithium batteries (instead of AGM batteries) incl. charging booster, battery monitor and batterymanagement panel		5,286
86035	70 A combi charger with 1,600 watt inverter		2,344
86224	160W solar system incl. MPPT regulator		1,353
	Total individual prices		8,983
	Minus price advantage		-3,403
<b>PACKAGE PRICE</b>			<b>5,580</b>



## MMP Multimedia Pack for all models

Code	Description	Weight	Price EUR
		in kg	VAT excl.
<b>86184</b>	<b>MMP – Multimedia Pack (special price)</b>	48	
86038	“Sound-system” radio pre-cabling including 4 loudspeakers and subwoofer		958
86040	Navigation system with 7" touch screen incl. tuner with DAB+, DVD slot, bluetooth and reversing camera behind lily logo (only in combination with radio precabing code 86037 or 86038)		1,597
86044	LED TV 22" in media tower, incl. integrated DVB-S2/DVB-T2 receiver, DVD slot and resonance loudspeaker		748
86041	Oyster Cytrac Vision satellite (without receiver)		2,933
	Total individual prices		6,236
	Minus price advantage		-1,454
<b>PACKAGE PRICE</b>			<b>4,782</b>

## MP1 Multimedia Pack without SAT system for all models

Code	Description	Weight	Price EUR
		in kg	VAT excl.
<b>86396</b>	<b>MP1 – Multimedia Pack without SAT system</b>	24	
86038	Radio pre-installation “Sound System” with 4 loud speakers and subwoofer		958
86040	Navigator unit with 7" touch screen incl. radio with DAB+, DVD slot, Blue Tooth and back-up camera behind lily flower		1,597
86044	LED TV 22" in media tower, incl. integrated DVB-S2/DVB-T2 receiver, DVD slot and resonance loudspeaker		748
	Total individual prices		3,303
	Minus price advantage		-706
<b>PACKAGE PRICE</b>			<b>2,597</b>

# Optional Features



## Chassis

Code	Description	Weight in kg	In package	Price EUR VAT excl.
1408	Fiat Ducato, Light Duty homologation <sup>7)</sup>	0		0
1409	Fiat Ducato, Heavy Duty homologation	0		0
86125	Fiat Ducato Maxi AMC45H, 4,5 t total weight	40		1,305
86225	Automatic gear box ZF AT9	30		2,815
86130	2,3 l engine (160 HP) Light Duty homologation <sup>7)</sup> (only in combination with code 1408)	0		1,782
86400	2,3 l engine (160 HP) Heavy Duty homologation (only in combination with code 1409)	0		2,681
86131	2,3 l engine (180 HP) Light Duty homologation <sup>7)</sup> (only in combination with code 1408)	10		3,689
86138	Multifunctional steering wheel	0,5		244
86155	Weight upgrade to 3,65 t for Fiat Ducato AMC 35L	0		181
86127	Reduction of total weight to 3,5 t for Fiat Ducato Maxi AMC 45H	0		181
86008	Towing attachment (detachable) incl. rear traverse extension	35		1,224
86139	Dashboard decor with aluminium inlays	0.5	CHP	138
86003	Exterior mirrors, electrically adjustable, incl. radio antenna (DAB+)	1	CHP	395
86163	Rear axle supports (2 crank supports)	10		272
86199	Hydraulic steady legs (AL-KO HY4) with automatic leveling function	70		5,706
86135	Automatic air conditioning with pollen filter in driver's cabin	18	CHP	1,592
86171	LED day running lights instead of standard ones	0	CHP	269
86013	16" alloy wheels for Fiat Ducato AMC 35L	0		1,168
86014	16" alloy wheels for Fiat Ducato Maxi AMC 45H	0		1,168
86017	18" alloy wheels for Fiat Ducato Maxi AMC 45H <sup>7)</sup>	12		2,261
86137	Steering wheel and shift knob in leather	0		231
86175	Goldschmitt rear air suspension incl. lifting and lowering device	30		5,790
86176	Front fog lamp	2	CHP	176
86018	16" spare wheel instead of Tire-Fit	25		378
86156	Automatic Start/Stop system (standard for 160HP and 180HP engine)	0		285

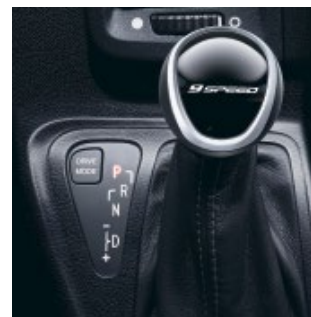
<sup>7)</sup> on page 18



86013/86014 Alloy wheels



86171 LED day running lights



86225 Automatic gear box



Code	Description	Weight in kg	In package	Price EUR VAT excl.
86187	Loose carpets for the driver's cab	3	CHP	91
86136	Cruise control	1	CHP	244
86157	AEBS (Advanced Emergency Braking System) including lane keeping assistant, high beam assistant, traffic sign recognition, light and rain sensors	2		832

CP Comfort Pack, CHP Chassis Pack, LEP Lithium Energy Pack, MP1 Multimedia Pack without SAT system, MMP Multimedia Pack

## Cabin and Living Room

Code	Description	Weight in kg	In package	Price EUR VAT excl.
86012	ClouLine-Design (black radiator cowl frame with radiator cowl and front bumper in own design and chrome profile, side spoilers at driver's cab and between cab and body, in the same colour as the model, in robust glass fiber, chrome applications at the back)	11		2,011
86204	Vehicle full painting (window frames and plugs in anthracite or black, roof in white)	6		Price on request
86217	Exterior decoration "Maxi black pearl"	3		413
86215	Exterior decoration "Carbon optic"	1		497
86205	Accent decoration "Champagner Matt" (Design sticker on front and rear panel and skirts)	0.5		520
86206	Accent decoration "Lava Orange" (Design sticker on front and rear panel and skirts)	0.5		520
86207	Accent decoration "Miami Blue" (Design sticker on front and rear panel and skirts)	0.5		520
86208	Accent decoration "Carbon Optik" (Design sticker on front and rear panel and skirts)	0.5		520
86177	Body windows with one-hand operation	0	CP	412
86079	Extendible table in living room	14		400
86025	Window at rear bed (standard in models 7.4)	5		395
86178	Fly screen door for body door	4	CP	269
86021	Electric panorama sunroof over living room (to be activated from the driver's cab)	18		1,164
86089	Comfort mattress incl. Froli bed system	0	CP	580
86186	Interior ambiance "Cool Stuff" (window surrounding in "Spider Champagne", B-pillar revetment, roof interior and side elements in the rear bedroom in buffalo leather)	10		3,269
86031	3.75 m awning incl. dimmable LED lights (only for models 7.4)	31		1,218
86032	3.25 m awning incl. dimmable LED lights (only for models 6.9)	28		1,084
86023	Panorama skylight over rear bed instead of standard skylight	12		1,000
86027	Garage hatch on the driver's side (left)	7		408
86144	Shale decorative surface on media tower "Black Star"	2		286
86145	Shale decorative surface on media tower "Jeera Green"	2		445
86179	Aguti comfort seats for driver and passenger, orientable and adjustable in height, in textile (instead of the original Fiat seats)	2	CP	857

Code	Description	Weight in kg	In package	Price EUR VAT excl.
86067	SKA front seats instead of Aguti ones (orientable and adjustable in height incl. seat heating and lombart supports). Additional price to Comfort Pack, code 86180	27		1,168
86066	Pull-out seat with 3-point-belt in the couch behind the driver and the passenger (registration for 4 persons)	98		1,548
86028	Exterior sliding out storage case on passenger side (right side)	18,5		503
86058	Loose carpet	8		600
86029	Darkening pleats for driver and passenger side and front windows	6	CP	748
86174	Interior insulating mat for windscreen and side windows	5		232
86188	Wall storage textile pockets in the rear bedroom on both sides (standard with "Cool Stuff" decoration, code 86186)	0.5		75
86185	Lowerable and extendible table with additional inflatable roll mattress to turn the couch into a single bed	12		731
86153	Additional mattress with Froli bed system between single beds (only for 7.4)	1.5		167

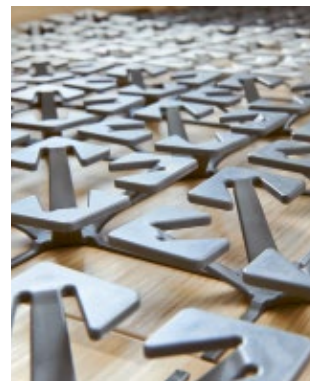
CP Comfort Pack, CHP Chassis Pack, LEP Lithium Energy Pack, MP1 Multimedia Pack without SAT system, MMP Multimedia Pack



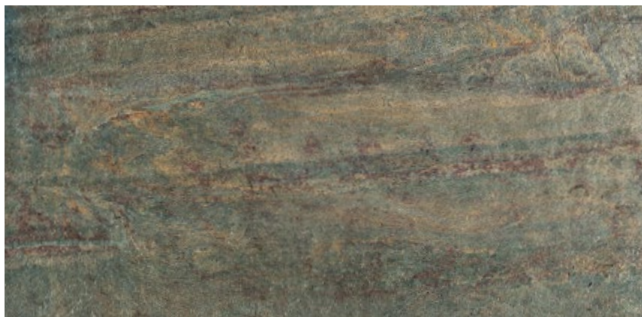
**86067** SKA front seats



**86028** Exterior sliding out storage case on passenger side



**86089** Froli bed system



**86145** Shale decorative surface on media tower "Jeera Green"



**86144** Shale decorative surface on media tower "BlackStar"

## Gas, Water, Heating

Code	Description	Weight in kg	In package	Price EUR VAT excl.
86059	Exterior shower in garage	1		248
86062	City water supply	1		272
86060	Shower tray	3		179
86149	Floor heating (only with warm water heating, code 86148)	5		1,202
86143	Fresh water tank upgrade to 200 l	14		407
86049	Gas supply connection in side wall	1		164
86050	Gas filter (two units) for camping gas bottles (only in combination with Truma DuoControl, code 86048)	1		171
86168	50 l/20 kg gas tank incl. display	36		1,512
86189	Shelves storage system in the garage instead of gas compartment (only in combination with gas tank, code 86168)	0		0
86052	Truma air heating with Combi 6 E heating elements	0		566
86148	3020 Alde warm water heating with thermostat. control and heating cartridge with touch screen control panel	29		2,328
86151	Engine heat exchanger (uses the engine cooling water to heat the living area, only in combination with warm water heating code 86148)	6		832
86152	Extended heating for warm water heating in the driver's cab (only in combination with warm water heating and engine heat exchanger, operable over separate touch screen panel)	3		1,465
86051	Narcotic gas alarm	1		387
86054	Inet Box to controll the warm water heating and underfloor air conditioning (SIM card needed but not included)	0		492
86061	SOG toilet ventilation	1		248
86048	Truma DuoControl CS gas flow control	2		239
86192	Ceramic bowl for cassette toilet	1		164

CP Comfort Pack, CHP Chassis Pack, LEP Lithium Energy Pack, MP1 Multimedia Pack without SAT system,  
MMP Multimedia Pack

## Electric Installation, Radio, TV, SAT, Navigation

Code	Description	Weight in kg	In package	Price EUR VAT excl.
86007	Alarm system (body, drivers'cab doors and garage hatch, control of the interior rooms can be switched off)	3		911
86084	Indirect lighting at the media tower (different colours, can be dimmed)	2		189
86083	"Green Grass" ambiance lighting in the living room door, can be dimmed	5		441
86085	"Green Grass" ambiance lighting in the rear bedroom	3		353
86202	"Reed" ambiance lighting in living room door, can be dimmed	5		441
86203	"Reed" ambiance lighting in the rear bedroom	3		353
86033	Second AGM battery for the body, 95 Ah	27		293
86220	2x 100 AH Lithium batteries (instead of AGM batteries) incl. charging booster, battery monitor and battery management panel (only in combination with combi charger, code 86035)	30	LEP	5,286

Code	Description	Weight in kg	In package	Price EUR VAT excl.
86055	Underfloor air conditioning (Saphir Comfort RC)	33		2,538
86035	70 A combi charger with 1,600 watt inverter (only in combination with second battery, code 86033 or Lithium batteries, code 86220)	12	LEP	2,345
86034	Strengthened battery charger, 32 A	8		271
86044	LED 22" television in media tower, incl. DVB-S2- / DVB-T2-receivers, DVD slot and resonance speaker	6	MMP / MP1	748
86040	Navigation system with 7" touch screen incl. tuner with DAB+, DVD slot, bluetooth and reversing camera behind lily logo (only in combination with radio precabbling code 86037 or 86038)	8	MMP, MP1	1,597
86197	Navigation system with 9" touch screen incl. Tuner with DAB+, bluetooth and reversing camera behind lily logo (only in combination with radio precabbling code 86037 or 86038)	8		2,176
86037	"Basic" radio precabbling, incl. 4 loudspeakers (only in combination with code 86003, electr. exterior mirrors with DAB+ radio antenna)	5		579
86038	"Sound-System" radio pre-cabbling, including 4 loudspeakers and subwoofer (only in combination with electr. mirrors & radio antenna DAB+, code-no. 86003)	10	MMP / MP1	958
86039	Radio with DAB+, incl. DVD slot (only in combination with radio precabbling code 86037 or 86038)	1		496
86047	Reverse driving alarm	1		319
86041	Oyster Cytrac satellite (without receiver)	24	MMP	2,933
86193	Oyster Cytrac twin satellite (without receiver)	28		3,353
86224	160 W solar system incl. MPPT regulator	10	LEP	1,353
86036	230 V plug in the garage	0.5		193
86005	Central locking for cab, body and garage hatch	2		662

CP Comfort Pack, CHP Chassis Pack, LEP Lithium Energy Pack, MP1 Multimedia Pack without SAT system, MMP Multimedia Pack



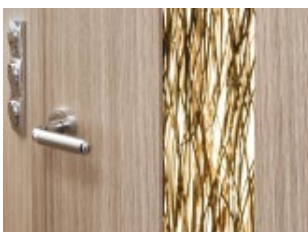
**86049** Gas supply connection



**86041** Oyster Cytrac satellite



**86084** Indirect lighting  
at the media tower



**86202** "Reed" ambience  
lighting in living room  
door



**86083** "Green Grass" ambience  
lighting in living room  
door



**86197** Navigation system with  
9" touch screen

## Upholstery

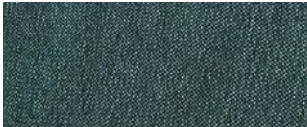
Code	Description	Weight	Price EUR
		in kg	VAT excl.
Seat cushions including driver and passenger's seats			
86098	Shadow (textile, anthracite)	0	0
86140	Grey (textile, grey)	0	0
86200	Green (textile, green)	0	0
86099	Temptation (leather, beige)	2	2,008
86100	Attraction (leather, anthracite)	2	2,008
86213	Sensation (leather, brown)	2	2,008
Backrest cushions, style "Kiss"			
86101	Grand Cru No. 1, including cushion 40 × 40 cm	0	0
86103	Grand Cru No. 3, including cushion 40 × 40 cm	0	0
86104	Grand Cru No. 4, including cushion 40 × 40 cm	0	0
86106	Grand Cru No. 6, including cushion 40 × 40 cm	0	0
86107	Grand Cru No. 7, including cushion 40 × 40 cm	0	0
86108	Grand Cru No. 10, including cushion 40 × 40 cm	0	0
86201	Grand Cru No. 14, including cushion 40 x 40 cm	0	0
86211	Grand Cru No. 15, including cushion 40 x 40 cm	0	0
86212	Grand Cru no. 16, including cushion 40 x 40 cm	0	0
86111	Beige leather, including cushion 40 × 40 cm	2	832
86112	Anthracite leather, including cushion 40 × 40 cm	2	832
86214	Brown leather, including cushions 40 x 40 cm	2	832
86070	Back covers for SKA driver and passenger seats with practical storage pockets (not available with leather backrest cushions, only in combination with SKA seats, <a href="#">code 86067</a> )	1	251



## Seat cushions Incl. driver's and passenger's seats



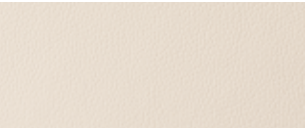
**Grey** textile, grey



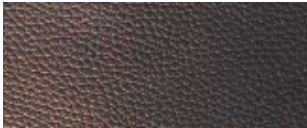
**Green** textile, green



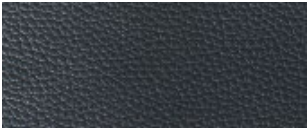
**Shadow** textile, anthracite



**Temptation** leather, beige



**Sensation** leather, brown



**Attraction** leather, anthracite

## Backrest cushions Incl. cushions 40 × 40 cm



**Grand Cru** No. 1



**Grand Cru** No. 3



**Grand Cru** No. 4



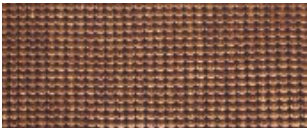
**Grand Cru** No. 6



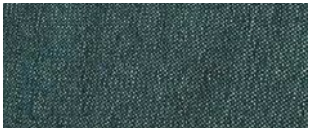
**Grand Cru** No. 7



**Grand Cru** No. 10



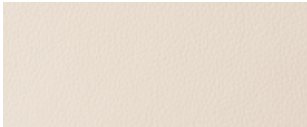
**Grand Cru** No. 14



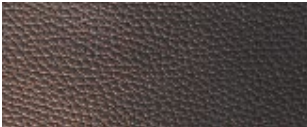
**Grand Cru** No. 15



**Grand Cru** No. 16



**Leather** beige



**Leather** brown



**Leather** anthracite



**Backrest cushions** Style “Kiss”

# Important Information

## Technical data Smove

- 1) The “mass in running order” according to EU directive accepted in VO (EU) no. 1230/2012 includes: the empty mass with standard equipment, driver (75 kg), filling quantities for fuel (90 %), fresh water in driving mode (20 l.), 100 % filled gas bottle, tool kit, Tire-fit and connecting cables. Differences as part of the manufacturer tolerance are possible and allowed.
- 2) The payload is the difference between the technically permissible laden mass and the total effective vehicle mass. Weights of the optional equipment have to be added to the “Mass in running order”.
- 3) The permissible total towing weight must not exceed 5,500 kg for AMC 35 L chassis and 6,000 kg for maxi chassis.
- 4) Further persons are allowed to ride along as far as the technically permissible laden mass is not exceeded and respective seats with safety belts are present.
- 5) The indication regarding the technically permissible towing weight braked represents a maximum value, which depends on the real vehicle mass incl. persons and loading. The technically permissible maximum towable mass shall not be in any case exceeded.
- 6) All information concerning the total towing weight is valid for a maximum incline of 12 % at an uphill start. Weight upgrade (Fiat Ducato Maxi AMC 45H) does not raise the total towing weight.
- 7) All Smove models with light duty homologation and with 18" wheels can only be registered in Germany with an individual approval. No COC available.

Due to the different materials, manufacturing procedures and light conditions, colour deviations can occur on bodywork and attachment parts. Colour deviations do not authorise complaints or warranty claims.

All the dimensions and weights are rounded figures and can vary according to the different homologation directives!

## Important information

This brochure is subject to change without notice. After the copy deadline of this price list (08/2020) changes as to models and products, floor plans, technical data, equipments, etc. may have occurred. The illustrations also contain optional features, and/or accessories which are not included in the standard equipment and decoration respectively which is not included in Niesmann+Bischoff's range of supply. Descriptions may have been garbled due to graphic conversion, photographic processing or technical reasons. All data on range of supply, appearance, performance, weights and measures, as well as fuel consumption of the vehicles are in compliance with the knowledge existing at

the time of the copy deadline and are valid for all purchase and licensing in the Federal Republic of Germany. Deviations of the values within a range of  $\pm 10\%$  are possible. The measures of the mattress may slightly vary from the given bed measures. E. g. data on the capacity of the refrigerators refer to producer information. Prices for optional features are only valid when installed during production. In case of subsequent installation additional installation and servicing expenditures are accrued at cost. We reserve the right to change prices, construction and equipment without notice. With the issue of this brochure all previously issued information and price lists become void.



# Imprint

## **Publisher**

Niesmann+Bischoff GmbH  
Clou-Strasse 1 | D-56751 Polch  
T +49 2654 933-0  
F +49 2654 933-100  
M [info@niesmann-bischoff.com](mailto:info@niesmann-bischoff.com)  
W [niesmann-bischoff.com](http://niesmann-bischoff.com)

## **Concept + Design**

3st kommunikation GmbH, Mainz

## **Photography**

mooi Studios, Mendig  
BUTTER. GmbH, Düsseldorf

## **Tech. Presentation + Renderings**

Studio SYN, Rüsselsheim

## **Printing**

K+W Kunst- und Werbedruck, Bad Oeynhausen

**Last updated: 01.08.2020**

## **Your dealer:**

## Design diversity

Personality comes from within. The same applies to your Smove. How would you like yours to look? Would you prefer classic-chic or something a bit bolder? No matter what decision you make, you will always feel right at home, as the fabrics and materials are all of high quality.

Build your very own Smove now at:

**[www.niesmann-bischoff.com/konfigurator/smove](http://www.niesmann-bischoff.com/konfigurator/smove)**



