

Carado
Vlow



The New Movement.

Standard Specification

Carado Camper Vans 2018



Basic vehicle

- Fiat Ducato, 2.0-I-Multijet light with 85 kW /115 BHP, emission standard Euro6
- Daytime running lights
- Driver airbag
- ESP incl. ASR & Hillholder
- ABS
- Electric cab windows
- Central locking cab with remote control
- Fix & Go breakdown kit
- On-board computer incl. exterior temperature display
- Central cup holder
- Disc brakes, rear and front wheel stabilisers, heat convection, tachometer, power steering, height-adjustable headlights, immobiliser, lap and diagonal seat belts
- 15" steel wheels with trims
- Tablet holder and USB port
- Driver and passenger seats in matching colours
- Swivel driver and passenger seats
- Height and rake adjustment for driver seat (optional for passenger seat)



Conversion

- Double glazed hinged windows with cassette blinds and fly screens
- Panoramic rooflight over lounging area with fly screen and blinds
- Roof light over bedroom with fly screen and blinds
- Rear storage space with 4 integrated lashing rings

Comfort

- Step for rear double bed access
- Pedestal in lounging area with integrated storage compartment
- Half dinette with integrated storage compartment
- Rear bed with divided slatted frame for better sleeping comfort
- Slatted bed frame folding upwards
- Ergonomically shaped upholstery for improved seating comfort
- Double light strip for free choice of sleeping direction (except 601)
- Spacious storage compartment and storage options
- 2 spacious wardrobes (except 540 with 1 wardrobe)
- Furniture Cinnamon Ice
- Floor Casual Suite

Installations

- Overhead locker with integrated LED light
- Individually adjustable LED spotlights
- High-performance, maintenance-free leisure battery (95 Ah AGM)
- Board control panel supplies information about filling levels and battery capacity

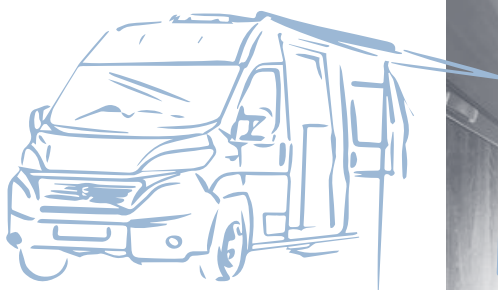
- Electric charger for leisure and vehicle battery 12V / 18 A (conservation charging)
- CEE 230 V external socket with safety device
- Sockets 1×12V, 4×230 V

Heating and Gas supply

- Gas bottle locker for 2×11 kg gas bottles (except 601 with 2×5 kg bottles)
- Gas heating Combi 4
- Gas control valves easily accessible and centrally arranged

Kitchen and Water supply

- Ergonomically arranged kitchen with spacious worktop
- Large drawers with soft-close in the kitchen unit
- 2-burner hob with glass lid
- Cutting board above sink (except 540)
- Soft-close drawer with cutlery organizer
- Water tank capacity: 100 l, waste water tank capacity: 90 l



- Compressor fridge 90 l (except for 540: 65l)
- LED spotlights
- Spice shelf (except 540)

Soft furnishing

- Explorer

Bathroom

- Fixed washbasin and integrated shower
- Cassette toilet C 200
- Flush-fitting LED spotlights
- Roof light with fly screen



Model Overview and Technical Data

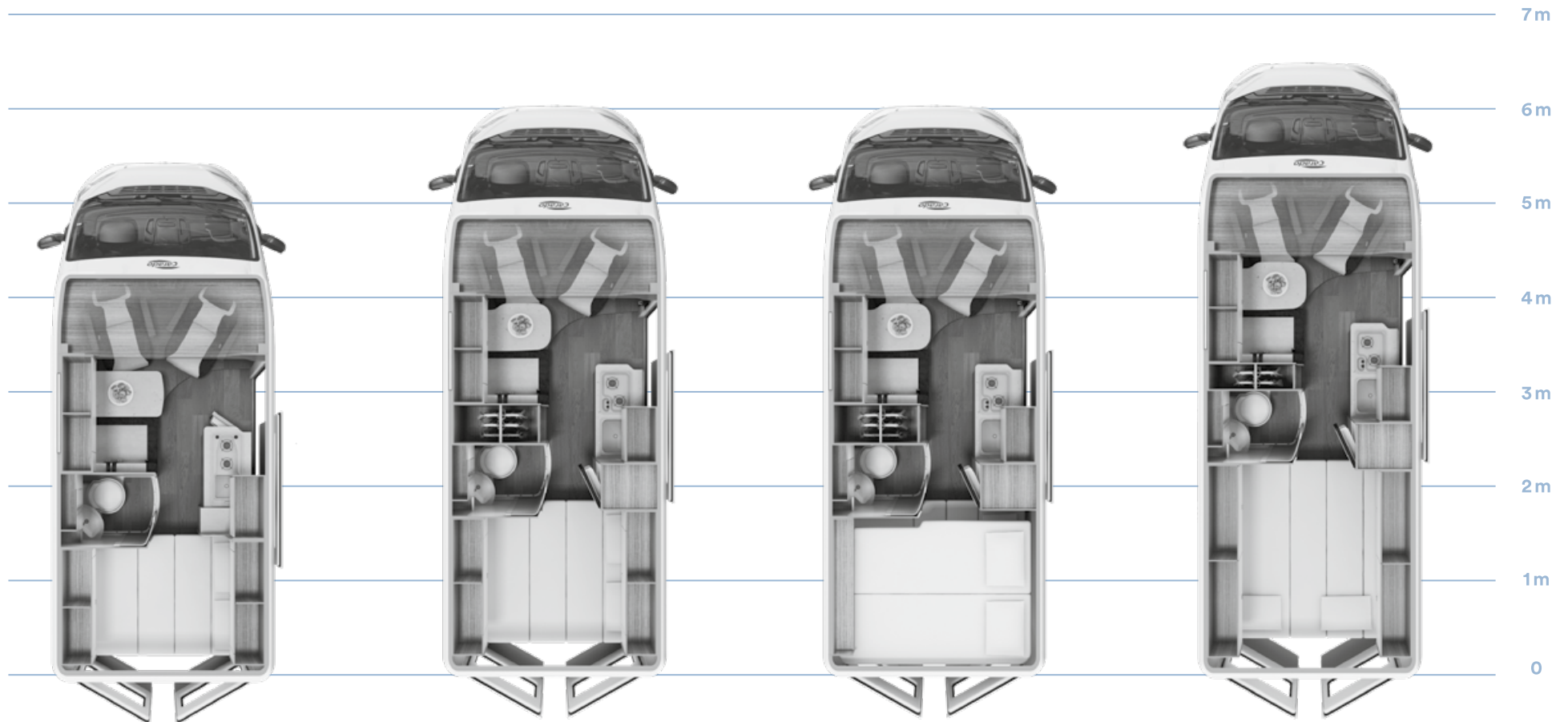
V 540

V 600

V 601

V 640

4



	V 540	V 600	V 601	V 640
Length / Width / Height (cm)	541 / 205 / 265	599 / 205 / 265	599 / 205 / 265	636 / 205 / 265
Internal height (cm)	190	190	190	190
Basic engine	2,0-l-MultiJet	2,0-l-MultiJet	2,0-l-MultiJet	2,0-l-MultiJet
Engine power kw (BHP)	85 (115)	85 (115)	85 (115)	85 (115)
Mass in running order (MIRO) (kg)	2.795	2.865	2.865	2.985
Payload (kg)	505	435	435	515
Maximum gross vehicle weight (kg)	3.300	3.300	3.300	3.500
Towing weight 12 % braked / unbraked ¹⁾ (kg)	2.000 / 750	2.000 / 750	2.000 / 750	2.000 / 750
Tyres	215 / 70 R 15 C	215 / 70 R 15 C	215 / 70 R 15 C	215 / 70 R 15 C
Wheel base (cm)	345	404	404	404
Berths	2 / 3 (OPT)	2 / 3 (OPT)	4 / 5 (OPT)	2 / 3 (OPT)
Bed-size rear bed (cm)	195 × 130 / 123	195 × 143	185 × 143	180 / 187 × 195
Bunk bed	-	-	174 × 140	-
Bed-size middle bed (cm)	180 × 80 (OPT)	180 × 80 (OPT)	180 × 80 (OPT)	180 × 80 (OPT)
Fridge (l)	65	90	90	90
Water tank / wastewater tank ²⁾ (l)	100 / 90	100 / 90	100 / 90	100 / 90
Battery / charger (Ah / A)	95 / 18	95 / 18	95 / 18	95 / 18
Power outlet 230 V	4	4	4	4
Power outlets 12 V	1	1	1	1
Heating	Combi 4	Combi 4	Combi 4	Combi 4
Swivelling seats for driver and passenger	✓	✓	✓	✓
Storage space under rear bed (H / B / T) (cm)	72 / 71 / 124	72 / 71 / 145	60 / 58 / 145	72 / 71 / 185

Package Overview

Basic Package

- **Wooden duckboard for shower tray**
- **Captain chairs with 2 armrests**
- **Worktop extension in kitchen**
- **Window in the bathroom**
- **Folding cab blinds**
- **Clothes rail in bathroom**
- **Entrance step**
- **Fly screen door**
- **Table extension in lounging area**





Chassis Package

- Manual cab air conditioning
- Passenger airbag
- Electric and heated exterior mirrors
- Cruise control
- Radio pre-wiring with loudspeakers and roof antenna (DAB)
- Height adjustment on passenger seat
- 120 l diesel tank

Chassis Comfort Package

- Leather steering wheel and gear knob
- Instrument panel with chrome rings
- Instrument panel with applications (Techno-Trim)
- LED daytime running lights
- Headlights with black frame
- Radiator grill in glossy black

The Vlow is full of surprises.

A wide range of solutions developed especially for the Vlow make this camper van the perfect and reliable companion on holiday.



Discover the entire range of Carado Original Accessories for 2018 at www.carado-original-zubehoer.com



Optional Equipment

Code Optional Equipment Camper Vans

Weight + V 540 V 600 V 601 V 640

	Fahrgestell				
	FIAT 2.3 I – 96 kW (130 BHP) – Euro 6	15	•	•	•
	FIAT 2.3 I – 109 kW (150 BHP) – Euro 6	15	•	•	•
	FIAT 2.3 I – 130 kW (177 BHP) – Euro 6	15	•	•	•
40270	Weight increase from 3.3t to 3.5t Fiat light	–	•	•	✓
40271	Weight increase from 3.3t Light to 3.5t MAXI chassis (not with 115 BHP; always incl. 16" steel rims)	40	–	•	–
40272	Weight increase from 3.5t Light to 3.5t MAXI chassis (not with 115 BHP; always incl. 16" steel rims)	40	–	–	•
20268	FIAT White	–	✓	✓	✓
20079	Aluminium Grey Metallic	–	•	•	•
20084	Fer Grey Metallic	–	•	•	•
20279	Bumper painted in White (for Fiat White 549) for Light chassis	1	•	•	•
20080	Bumper painted in Aluminium Grey metallic for Light chassis	1	•	•	•
20308	Bumper painted in Fer Grey Metallic for Light chassis	1	•	•	•
20254	16" alloy wheels for 3.5 t Light chassis (only in conjunction with weight increase)	-2	•	•	•
20280	16" alloy wheels for 3.5 t Maxi Chassis	-2	–	•	•
20281	FIAT 16" steel rims for Light chassis with 3.5t (only in conjunction with weight increase) with wheel trims	2	•	•	•
20107	Traction+ incl. Hill Descent Control	1	•	•	•
20086	Comfort-Matic gearbox (not possible for 115 BHP and not possible without ESP)	17	•	•	•
20260	Fog lights	2	•	•	•
20265	Parking sensors	1	•	•	•
20352	Upgraded alternator (200 Ah)	3	•	•	•
20264	Tyre pressure indicator	1	•	•	•
20030	Climate control as extra on Chassis Package	18	•	•	•

✓ standard specification

• optional extras

– not possible

all footnotes, see page 10



Body

40128	Insulated wastewater tank	2	•	•	•	•
-------	---------------------------	---	---	---	---	---



Interior/Living area

40029	Bed conversion for lounging area (transversal guest bed)	5	•	•	•	•
	Soft furnishing Arctica	–	•	•	•	•



Installations

40015	Second leisure battery 95 Ah	27	•	•	•	•
40266	Pre-wiring for solar panel	–	•	•	•	•
40292	Digital control panel for Combi heating	–	•	•	•	•
40267	Duo Control CS – Gas regulator with safety valve, crash sensor, automatic switch-over and Ice-Ex	–	•	•	•	•
40268	Pre-wiring TV	1	•	•	•	•
40054	Pre-wiring reversing camera	1	•	•	•	•



Packages

80138	Chassis Package consisting of: Manual cab air conditioning, Front passenger airbag, electric and heated mirrors, cruise control, radio pre-wiring with loudspeakers and roof antenna (DAB), height adjustment on passenger seat, 120 l diesel tank	58	•	•	•	•
80139	Chassis Comfort Package consisting of: Leather steering wheel and gear knob in leather trim, instrument panel with chrome rings, Instrument panel with applications (Techno-Trim), LED daytime running lights, headlights with black frame, radiator grill in glossy black	–	•	•	•	•
80137	Basic Package consisting of: ³ Wooden duckboard for the shower tray, Captain chairs with two armrests, worksurface extension in kitchen, window in the bathroom, folding cab blinds, clothes rail in bathroom, entrance step, flyscreen door, table extension in lounging area	44	•	•	•	•

Information

General information

The “mass in running order” (MIRO) according to VO (EU) 1230/2012 is the mass of the unladen vehicle including the driver (75 kg) and full tank of fuel (90%) as well as the basic equipment: Fresh water tank with reduced volume (20 kg), gas bottle (15 kg) and cable drum (4 kg). The maximum technical permissible laden mass (MTPLM) as well as the maximum axle loads should not be exceeded by personal belongings, number of passengers or optional equipment. The maximum user payload and permitted number of persons will reduce according to which optional equipment is selected.

The information regarding delivery, appearance, performance, dimensions and weight of the vehicles correspond to the existing knowledge at the date of printing and to the European homologation regulations. These may change by the time the vehicle is purchased or delivered. Variations within the factory tolerances (+/- 5% max.) are possible and permitted.

Price list Carado Camper Vans version 03/2017, prices valid from 01.08.2017.

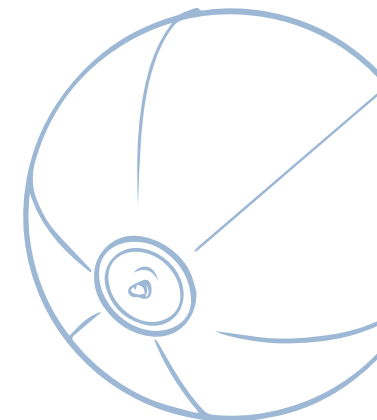
With the issue of this price list all previous price lists are rendered invalid. Throughout Europe there might be different Euro prices depending on the country specifications in standard equipment, VAT or luxury tax.

Copyright: Sunlight/Carado GmbH. Errors and printing mistakes on prices and technical data are reserved.

Footnotes

Prices for options only apply for factory-fitted options on new vehicles. Indication of dimensions and weight are approximate. The vehicle weight corresponds to standard specification without optional extras. It is not possible to increase the load retrospectively as this would require changes to the chassis.

- 1) From 130 BHP engine – 2.500/750 kg, with Maxi Chassis – 3.000/750 kg.
- 2) Capacity of fresh water tank within the Regulation (EU) 1230/2012, taking into account the limitation valve on the fresh water tank (20 litres) is open.
- 3) If the Basic Package (code 80067) is not ordered, the captain's chair and clothes rack in the wet room need to be fitted compulsorily.



Carado
VIEW

Contact

Carado GmbH
Bahnhof 11
D-88299 Leutkirch im Allgäu

Telephone: +49 7561 9097-300
Fax: +49 7561 9097-400

info@carado.de
www.carado.de/en

A company of the
Erwin Hymer Group



